

# TM 5-3431-208-35P

DEPARTMENT OF THE ARMY TECHNICAL MANUAL

---

DIRECT AND GENERAL SUPPORT AND DEPOT MAINTENANCE  
REPAIR PARTS AND SPECIAL TOOLS LISTS

**WELDING SET, ARC, INERT GAS SHIELDED:**

**PLASTIC OR METAL LINED GUN;**

**FOR 3/64 IN. WIRE DC, 115V,**

**(LINDE MODEL SWM-9-A)**

**FSN 3431-972-7672**

---

HEADQUARTERS, DEPARTMENT OF THE ARMY

MAY 1970



TECHNICAL MANUAL }  
 No. 5-3431-208-35P }

HEADQUARTERS  
 DEPARTMENT OF THE ARMY  
 WASHINGTON, D. C., 27 May 1970

DIRECT AND GENERAL SUPPORT AND DEPOT MAINTENANCE REPAIR PARTS  
 AND SPECIAL TOOLS LIST

WELDING SET, ARC, INERT GAS SHIELDED: PLASTIC OR  
 METAL LINED GUN; FOR 3/64 IN. WIRE; DC, 115V.  
 (LINDE MODEL SWM-9-A)  
 FSN 3431-972-9672

Current as of 19 August 1969

	Paragraph	Page
SECTION I. INTRODUCTION		
Scope .....	1	iii
General .....	2	iii
Explanation of columns .....	3	iii
Special information .....	4	iv
How to locate repair parts .....	5	iv
Abbreviations .....	6	v
Federal supply codes for manufacturers .....	7	v
Recommendations for maintenance manual improvements .....	8	v
II. REPAIR PARTS FOR DIRECT SUPPORT, GENERAL SUPPORT AND DEPOT MAINTENANCE		
Group 22. Body Chassis or Hull and Accessory Items		
2202 Accessory items .....		1
2210 Data plates .....		1
44. Welding Equipment		
4407 Control panels, housing .....		1
4408 Connecting devices .....		5
4409 Protective devices, electrical .....		8
4410 Switching, timing and speed control .....		8
4411 Resistor components .....		11
4413 Rectifier components .....		12
4416 Head, torch and gun unitized components .....		12
47. Gages (Non-Electrical), Weighing and Measuring Devices		
4702 Gages .....		16
4705 Flow meters and regulators .....		16
95. General Use Standardized Parts		
9501 Bulk materiel .....		18
99. Parts Peculiar		
9901 Multi-listed parts .....		19
SECTION III. SPECIAL TOOLS, TEST AND SUPPORT EQUIPMENT FOR DS, GS, AND DEPOT MAINTENANCE. (NOT APPLICABLE.)		
IV. FEDERAL STOCK NUMBER AND REFERENCE NUMBER INDEX		

\*This manual together with TM 5-3431-208-20P, 27 May 1970 supersedes TM 5-3431-208-25P, 11 July 1963, including all changes.



## SECTION I

### INTRODUCTION

#### 1. Scope

This manual lists repair parts required for the performance of direct support, general support, and depot maintenance of the welding set,

#### 2. General

a. The Repair Parts List is arranged as follows:

(1) Individual parts and major assemblies are listed alphabetically by item name within the numbered functional groups.

(2) Assembly components and subassemblies are indented and listed alphabetically by item name under major assemblies.

b. This Repair Parts and Special Tools List is divided into the following sections:

(1) *Repair Parts-Section II.* A list of repair parts authorized for the performance of maintenance at the direct support, general support, and depot level.

(2) *Special Tools, Test and Support Equipment-Section III.* A list of special tools, test and support equipment authorized for the performance of maintenance at the direct support, general support, and depot level. (Not Applicable.)

(3) *Federal Stock Number and Reference Number Index-Section IV.* A list of Federal stock numbers followed by reference numbers in ascending alpha-numeric sequence cross-referenced to index number.

#### 3. Explanation of Columns

The following provides an explanation of columns in the tabular lists in Sections II and III:

a. *Source, Maintenance, and Recoverability Codes (SMR), Column (1).*

(1) Source code indicates the selection status and source for the listed item. Source codes used are:

Code	Explanation
P	Applied to repair parts which are stocked in or supplied from DSA/GSA or Army supply system, and authorized for use at indicated maintenance categories.

Code	Explanation
M	Applied to repair parts which are not procured or stocked but are to be manufactured at indicated maintenance categories.
A	Applied to assemblies which are not procured or stocked as such but made up of two or more units, each of which carry individual stock numbers and descriptions and are procured and stocked and can be assembled by units at indicated maintenance categories.
X	Applied to parts and assemblies which are not procured or stocked, the mortality of which is normally below that of the applicable end item, and the failure of which should result in retirement of the end item from the supply sys
X1	Applied to repair parts which are not procured or stocked, the requirement for which will be supplied by use of the next higher assembly or components.
X2	Applied to repair parts which are not stocked. The indicated maintenance category requiring such repair parts will attempt to obtain them through cannibalization; if not obtainable through cannibalization, such repair parts will be requisitioned with supporting justification through normal supply channels.
G	Applied to major assemblies that are procured with PEM (Procurement Equipment Missile Army) funds for initial issue only to be used as exchange assemblies at DSU and GSU maintenance level. These assemblies will not be stocked above DSU and GSU level or returned to depot supply level.

*Note.* Source code is not shown on common hardware items known to be readily available in Army supply channels and through local procurement.

(2) Maintenance code indicates the lowest category of maintenance authorized to install the listed item. The maintenance level codes are:

Code	Explanation
O	Organizational Maintenance
F	Direct Support Maintenance
H	General Support Maintenance
D	Depot Maintenance

(3) Recoverability code indicates whether unserviceable items should be returned for recovery or salvage. Items not coded are expendable. Recoverability codes are:

Code	Explanation
R	Applied to repair parts and assemblies which are economically repairable at DSU and GSU activities and normally are furnished by supply on an exchange basis.
T	Applied to high dollar value recoverable repair parts which are subject to special handling and are issued on an exchange basis. Such repair parts normally are repaired or overhauled at depot maintenance activities.
U	Applied to repair parts specifically selected for salvage by reclamation units because of precious metal content, critical materials, high dollar value reusable casings or castings.

(4) This column also lists, below the SMR code, an index number for each item in ascending numerical sequence, which is used to locate items in the publication when the Federal stock number and/or reference number is known.

*b. Federal Stock Number, Column (2).* This column indicates the Federal stock number for the item.

*c. Description, Column (3).* This column indicates the Federal item name and any additional description of the item required. A part number or other reference number is followed by the applicable five-digit Federal supply code for manufacturers in parentheses. Material required for manufacture or fabrication is identified.

*d. Unit of Issue, Column (4).* This column indicates the unit used as basis for issue, e.g., ea, pr, ft, yd, etc.

*e. Quantity Incorporated in Unit, column (5).* This column indicates the quantity of the item used in the functional group.

*f. Thirty-Day DS/GS Maintenance Allowances, Columns (6) and (7).*

(1) The allowance columns are divided into three subcolumns. Indicated in each subcolumn is the quantity of items authorized for the number of equipments supported. Items authorized for use as required but not for initial stockage are identified with an asterisk in the allowance column.

(2) The quantitative allowances for DS/GS levels of maintenance will represent initial stockage for a 30-day period for the number of equipments supported.

(3) Determination of the total quantity of parts required for maintenance of more than 100 of these equipments can be accomplished by converting the equipment quantity to a decimal factor by placing a decimal point before the next to last digit of the number to indicate hundredths, and multiplying the decimal factor by the parts quantity authorized in the 51-100 allowance col-

umn. Example, authorized allowance for 51-100 equipments is 40; for 1.50 equipments multiply 40 by 1.50 or 60 parts required.

*g. One-Year Allowances Per 100 Equipments/Contingency Planning Purposes, Column (8).* This column indicates the quantity required for distribution and contingency planning purposes. The range of items indicates total quantities of all authorized items required to provide for adequate support of 100 equipments for one year.

*h. Depot Maintenance Allowance Per 100 Equipments, Column (9).* This column indicates the quantity authorized for depot maintenance of 100 equipments. Items authorized for use but not for initial stockage are identified with an asterisk in the allowance column.

*i. Illustration, Column (10).*

(1) *Figure number, column (10) (a).* Indicates the figure number of the illustration in which the item is shown.

(2) *Item number, column (10) (b).* Indicates the callout number used to reference the item in the illustration.

#### 4. Special Information

*a.* Repair parts mortality has been based on 1,000 hours of operation per year.

*b.* Parts which require manufacture or assembly at a category higher than that authorized for installation will indicate in the source column the higher category.

*c.* The following publications pertain to the welding set and its components:

TM 5-3431-208-15	Operator, Organizational, DS, GS, and Depot Maintenance Manual.
TM 5-3431-208-20P	Organizational Maintenance Repair Parts and Special Tool Lists.

#### 5. How to Locate Repair Parts

*a.* When Federal stock number or reference number is unknown:

(1) *First.* Using the table of contents, determine the functional group within which the repair part belongs.

(2) *Second.* Find the illustration covering the functional group to which the repair part belongs.

(3) *Third.* Identify the repair part on the illustration, and note the illustration figure and item number of the repair part.

(4) *Fourth.* Using the Repair Parts Listing, find the functional group to which the repair part belongs and locate the illustration figure and item number noted on the illustration.

*b.* When Federal stock number or reference number is known:

(1) *First.* Using the Index of Federal Stock Number and Reference Numbers, find the pertinent Federal stock number or reference number. This index is in ascending alpha-numeric sequence cross-referenced to an index number.

(2) *Second.* Using the Repair Part Listing, find the index number referenced in the Index of Federal Stock Numbers and Reference Numbers.

#### 6. Abbreviations

amp ----- ampere  
 dc ----- direct current  
 dia ----- diameter  
 ea ----- each  
 ft ----- feet, foot  
 grp ----- group  
 id ----- inside diameter  
 in. ----- inch(es)  
 lg ----- long, length  
 mtg ----- mounting

od ----- outside diameter  
 sh ----- sheet  
 thk ----- thick(ness)  
 uf ----- microfarad  
 u/w ----- used with  
 v ----- volt  
 w ----- watt  
 w ----- wide, width  
 w/ ----- with

#### 7. Federal Supply Codes for Manufacturers

Code	Manufacturer
36346 ----	Union Carbide Corp., Linde Division
44655 ----	Ohmite Mfg Co.
56365 ----	Square D Co.
59730 ----	Thomas and Betts Co., The
70485 ----	Atlantic India Rubber Works Inc.
95987 ----	Weckesser Co. Inc.
96906 ----	Military Standards Promulgated By Standardization Div., Directorate of Logistic Services DSA

#### 8. Recommendations for Maintenance Manual Improvements

Report of errors, omissions, and recommendations for improving this publication by the individual user is encouraged. Reports should be submitted on DA Form 2028 (Recommended Changes to Publications) and forwarded direct to Commanding General, U. S. Army Mobility Equipment Command, ATTN: AMSME-MPP, 4300 Goodfellow Boulevard, St. Louis, Mo. 63120.





(1)	(2)	(3)	(4)	(5)	(6)			(7)			(8)	(9)	(10)		
SMR	FEDERAL	DESCRIPTION	USABLE	UNIT	QTY	30-DAY DS MAINT			30-DAY GS MAINT			1-YR	DEPOT	ILLUS-	
CODE	STOCK		ON	OF	(a)	(b)	(c)	(a)	(b)	(c)	PER	ALW	MAINT	TRATION	
	NUMBER	REF NUMBER & MFR CODE	CODE	MEAS	INC	1-20	21-50	51-100	1-20	21-50	51-100	100	100	100	
					IN							EQUIP	EQUIP	FIG.	
					UNIT							CNTGY	EQUIP	NO.	
														ITEM	
														NO.	
		SECTION II - REPAIR PARTS FOR DIRECT SUPPORT, GENERAL SUPPORT AND DEPOT MAINTENANCE													
00001		GROUP 22 - BODY CHASSIS OR HULL AND ACCESSORY ITEMS													
00002		2202 - ACCESSORY ITEMS													
P O 00003	3431-981-1036	HOSE, ARGON: REGULATOR TO CONTROL ASSEMBLY 521078 (36346)	EA	1	*	*	2	*	*	2	6	5	7	12	
P O 00004	3439-775-6476	ELECTRODE, WELDING 5052F87 (36346)	EA	1	13	25	50	13	25	50	600	600			
00005		2210 - DATA PLATES													
X2 O 00006		NAMEPLATE: ARGON GAS SWITCH 46N16 (36346)	EA	1									2	9	
F 00007	5310-011-3102	NUT, PLAIN, HEXAGON: IDENTIFICATION PLATE MTG	EA	4	*	*	*	*	*	*	*	*	*	1	22
X2 O 00008		PLATE, IDENTIFICATION 521075 (36346)	EA	1											
X2 F 00009	9905-803-9431	PLATE, IDENTIFICATION: CORPS OF ENGINEER, TYPE C	EA	1									1	25	
X2 O 00010		PLATE, IDENTIFICATION: FUSEHOLDER 521071 (36346)	EA	3									2	16	
X2 O 00011		PLATE, IDENTIFICATION: LINE SWITCH ON-OFF 458670 (36346)	EA	1									2	15	
X2 O 00012		PLATE, IDENTIFICATION: SELECTOR SWITCH 14N78 (36346)	EA	1									2	30	
X2 O 00013		PLATE, IDENTIFICATION: SPARE FUSE 521072 (36346)	EA	1									1	13	
X2 O 00014		PLATE, IDENTIFICATION: VARIABLE RESISTOR WELDING CONTROL 48N67 (36346)	EA	1									2	7	
X2 O 00015		PLATE, NAME: TORCH ASSEMBLY 95N37 (36346)	EA	1									4	9	
X2 F 00016	5305-206-3716	SCREW, MACHINE: IDENTIFICATION PLATE MTG	EA	4									1	26	
X2 O 00017	5305-889-3116	SCREW, MACHINE: NAMEPLATE MTG	EA	2									4	8	
X2 F 00018	5310-184-8977	WASHER, LOCK: IDENTIFICATION PLATE MTG	EA	4									1	23	
00019		GROUP 44 - WELDING EQUIPMENT													
00020		4407 - CONTROL PANELS, HOUSING													
X2 O 00021		CONTROL ASSEMBLY: VOLTAGE 521060 (36346)	EA	1									1		
X2 O 00022		ADAPTER, STRAIGHT, PIPE: SOLENOID VALVE TO ARGON HOSE ASSEMBLY 3389 (36346)	EA	1							SEE GRP 4408				
P O 00023	5975-669-9467	BOX CONNECTOR, ELECTRICAL: POWER CABLE, CONTACTOR CABLE, TORCH SWITCH CABLE TO CONTROL ASSEMBLY 2522 (59730)	EA	3							SEE GRP 4408				
P O 00024	5975-296-6984	BOX CONNECTOR, ELECTRICAL: WELDING CABLE 458673 (36346)	EA	1							SEE GRP 4408				
X2 O 00025		BRACKET, MOUNTING: RECTIFIER 458676 (36346)	EA	2							SEE GRP 4413				
X2 O 00026		BRACKET, MOUNTING: SELECTOR SWITCH 52N31 (36346)	EA	1							SEE GRP 4410				

(1)	(2)	(3)	(4)	(5)	(6)	(7)	(8)	(9)	(10)	
SMR	FEDERAL	DESCRIPTION			30-DAY DS MAINT	30-DAY GS MAINT	1-YR	DEPOT	ILLUS-	
CODE	STOCK		USABLE	UNIT	ALLOWANCE	ALLOWANCE	ALW	MAINT	TRATION	
	NUMBER	REF NUMBER & MFR CODE	ON	OF	(a)	(b)	(c)	PER	(a)	
			CODE	MEAS	INC			100	(b)	
					IN			EQUIP	ITEM	
					UNIT	1-20	21-50	51-100	NO.	
									NO.	
X2 O 00027		BUMPER: CONTROL ASSEMBLY 98W73 (36346)		EA	4				1	36
X2 O 00028		BUSHING, SEAL: ARGON GAS SWITCH AND MAIN LINE SWITCH MTG 458689 (36346)		EA	2			SEE GRP 4410		
X2 F 00029		CABINET: CONTROL 521065 (36346)		EA	1				1	53
P O 00030	3431-977-5387	CABLE ASSEMBLY: CONTACTOR TO CONTROL ASSEMBLY 458697 (36346)		EA	1			SEE GRP 4408		
X2 O 00031		CABLE ASSEMBLY, POWER 521068 (36346)		EA	1			SEE GRP 4408		
X2 O 00032		CLAMP, LOOP, CABLE: CONTROL CABINET 1-2-6 (95987)		EA	3				1	44
									2	22
P O 00033	3431-977-5396	CONNECTOR: ARGON HOSE 74S76 (36346)		EA	1			SEE GRP 4408		
P O 00034	3431-977-5392	CONNECTOR: TORCH POWER CABLE TO CONTROL ASSEMBLY 48V25 (36346)		EA	1			SEE GRP 4408		
X2 O 00035		CONNECTOR: WORK PICKUP CABLE TO CONTROL ASSEMBLY 180W73 (36346)		EA	1			SEE GRP 4408		
P O 00036	5920-280-4465	FUSE, CARTRIDGE: VOLTAGE CONTROL CABINET, ONE AMP, GLASS TUBE TYPE, 250V, F1, F2, F3 82W43 (36346)		EA	3			SEE GRP 4409		
X2 O 00037		FUSEHOLDER: VOLTAGE CONTROL CABINET 458674 (36346)		EA	3			SEE GRP 4409		
M O 00038		GASKET: DOOR MANUFACTURE FROM:		EA	2				2	1
P O 00039	5330-202-3495	RUBBER STRIP, SOLID (8 1/2 IN. REQUIRED FOR EACH GASKET)		FT				SEE GRP 9501		
M O 00040		GASKET: DOOR MANUFACTURE FROM:		EA	2				2	27
P O 00041	5330-202-3495	RUBBER STRIP, SOLID (14 1/4 IN. REQUIRED FOR EACH GASKET)		FT				SEE GRP 9501		
X2 O 00042		GASKET: HANDLE 458721 (36346)		EA	2				1	20
M O 00043		GASKET: POWER CABLE, CONTACTOR CABLE, TORCH SWITCH CABLE CONNECTOR TO CONTROL ASSEMBLY 458709 (36346)		EA	4			SEE GRP 4408		
X2 O 00044		GASKET: SOLENOID VALVE TO CONTROL ASSEMBLY 458714 (36346)		EA	1			SEE GRP 4410		
X2 O 00045		GASKET: TORCH POWER CABLE CONNECTOR TO CONTROL ASSEMBLY 458703 (36346)		EA	1			SEE GRP 4408		
M O 00046		GASKET: WELDING CABLE BOX CONNECTOR TO CONTROL ASSEMBLY 458710 (36346)		EA	1			SEE GRP 4408		
X2 O 00047		GROMMET, RUBBER: ARGON HOSE CONNECTOR TO CONTROL ASSEMBLY 92W57 (36346)		EA	1			SEE GRP 4408		
X2 O 00048		GROMMET, RUBBER: HEATSHIELD 97 (70485)		EA	1			SEE GRP 4411		

(1)	(2)	(3)	(4)	(5)	(6)	(7)	(8)	(9)	(10)		
SMR	FEDERAL	DESCRIPTION	USABLE	UNIT	QTY	30-DAY DS MAINT	30-DAY GS MAINT	1-YR	DEPOT	ILLUS-	
CODE	STOCK	REF NUMBER & MFR CODE	ON	OF	INC	ALLOWANCE	ALLOWANCE	ALW	MAINT	TRATION	
	NUMBER		CODE	MEAS	IN	(a)	(b)	(c)	PER	(a)	(b)
					UNIT	1-20	21-50	51-100	100	FIG.	ITEM
						1-20	21-50	51-100	EQUIP	NO.	NO.
X2 O 00049		HANDLE 521066 (36346)		EA	1					1	19
P O 00050	3431-859-4243	HOSE ASSEMBLY, ARGON GAS: TORCH POWER CABLE CONNECTOR TO SOLENOID VALVE 458704 (36346)		EA	1				SEE GRP 4408		
X2 O 00051		INSULATOR: TERMINAL BOARD 06N11 (36346)		EA	1				SEE GRP 4408		
X2 O 00052		KNOB: VARIABLE RESISTOR WELDING CONTROL 89W81 (36346)		EA	1				SEE GRP 4411		
X2 O 00053		MOUNT, FUSE: SPARE FUSE 96W10 (36346)		EA	1				SEE GRP 4409		
X2 O 00054		NAMEPLATE: ARGON GAS SWITCH 46N16 (36346)		EA	1				SEE GRP 2210		
X2 O 00055		NUT, CAP: ARGON GAS SWITCH AND MAIN LINE SWITCH MTG 458688 (36346)		EA	2				SEE GRP 4410		
X2 O 00056	5310-262-6169	NUT, PLAIN, HEXAGON: ADJUSTABLE RESISTOR MTG		EA	2				SEE GRP 4411		
X2 O 00057	5310-934-9757	NUT, PLAIN, HEXAGON: ADJUSTABLE RESISTOR MTG		EA	2				SEE GRP 4411		
X2 O 00058	5310-934-9757	NUT, PLAIN, HEXAGON: ARMATURE RELAY MTG		EA	4				SEE GRP 4410		
X2 O 00059	5310-934-9757	NUT, PLAIN, HEXAGON: CABLE CLAMP TO CONTROL ASSEMBLY MTG		EA	5					2	2
X2 O 00060	5310-934-9757	NUT, PLAIN, HEXAGON: CURRENT RELAY MTG		EA	2				SEE GRP 4410		
X2 O 00061	5310-262-6169	NUT, PLAIN, HEXAGON: FIXED RESISTOR MTG		EA	2				SEE GRP 4411		
X2 O 00062	5310-934-9757	NUT, PLAIN, HEXAGON: GROUNDING SCREW AND CABINET ASSEMBLY BUMPER MTG		EA	5					1	1
X2 O 00063	5310-042-6903	NUT, PLAIN, HEXAGON: HANDLE MTG		EA	4					1	52
X2 O 00064	5310-934-9757	NUT, PLAIN, HEXAGON: SELECTOR SWITCH BRACKET MTG		EA	2				SEE GRP 4410		
X2 O 00065	5310-720-7798	NUT, PLAIN, WING: GROUND LEAD MTG		EA	1					1	29
X2 O 00066		PLATE, IDENTIFICATION: FUSEHOLDER 521071 (36346)		EA	3				SEE GRP 2210		
X2 O 00067		PLATE, IDENTIFICATION: INSTRUCTION 521073 (36346)		EA	1						
X2 O 00068		PLATE, IDENTIFICATION: LINE SWITCH, ON- OFF 458670 (36346)		EA	1				SEE GRP 2210		
X2 O 00069		PLATE, IDENTIFICATION: SCHEMATIC WIRING 521076 (36346)		EA	1						
X2 O 00070		PLATE, IDENTIFICATION: SELECTOR SWITCH 14N78 (36346)		EA	1				SEE GRP 2210		
X2 O 00071		PLATE, IDENTIFICATION: SPARE FUSE 521072 (36346)		EA	1				SEE GRP 2210		
X2 O 00072		PLATE, IDENTIFICATION: VARIABLE RESISTOR WELDING CONTROL 48N67 (36346)		EA	1				SEE GRP 2210		
X2 O 00073		PLATE: SOLENOID VALVE TO CONTROL ASSEMBLY 458713 (36346)		EA	1				SEE GRP 4410		
P O 00074	6130-859-4496	RECTIFIER: DRY, SR 458675 (36346)		EA	1				SEE GRP 4413		

(1) SMR CODE	(2) FEDERAL STOCK NUMBER	(3) DESCRIPTION  REF NUMBER & MFR CODE	(4) USABLE ON CODE	(5) UNIT OF MEAS	(6) QTY INC IN UNIT	(7) 30-DAY DS MAINT ALLOWANCE			(8) 30-DAY GS MAINT ALLOWANCE			(9) 1-YR DEPOT MAINT ALW PER 100 EQUIP 100 EQUIP	(10) ILLUS- TRATION		
						(a)	(b)	(c)	(a)	(b)	(c)		(a)	(b)	
P O 00075	5945-173-8320	RELAY, ARMATURE: PROTECTIVE, PR 80N29 (36346)	EA	1											
P O 00076	5945-846-0433	RELAY, ARMATURE: WELD START AND AUXILIARY WELD START, 24V, DC, RA, RB 97W55 (36346)	EA	2											
P O 00077	5945-859-4497	RELAY, CURRENT: WELD CURRENT, RC 458687 (36346)	EA	1											
P O 00078	5905-834-7831	RESISTOR, ADJUSTABLE: W/BRACKETS, 250 OHM, 200 W, RL 89W80 (36346)	EA	1											
P O 00079	5905-686-2872	RESISTOR, FIXED, WIRE WOUND: 5 OHM, 5 W, R3 1D48F5 (44655)	EA	1											
P O 00080	5905-549-5659	RESISTOR, VARIABLE: WELDING CONTROL, WIRE FEED MOTOR CIRCUIT, 75 OHM, 25 W, VR 0150 (44655)	EA	1											
X2 O 00081	5305-984-6194	SCREW, MACHINE: ADJUSTABLE RESISTOR MTG	EA	2											
X2 O 00082	5305-019-2207	SCREW, MACHINE: ADJUSTABLE RESISTOR MTG	EA	1											
X2 O 00083	5305-013-2688	SCREW, MACHINE: ARMATURE RELAY MTG	EA	4											
X2 O 00084	5305-984-6194	SCREW, MACHINE: ARMATURE RELAY MTG	EA	4											
X2 O 00085	5305-984-6194	SCREW, MACHINE: CABINET ASSEMBLY BUMPER MTG	EA	4										1	21
X2 O 00086	5305-984-6194	SCREW, MACHINE: CABLE CLAMP TO CONTROL ASSEMBLY MTG	EA	1										2	13
X2 O 00087	5305-984-6194	SCREW, MACHINE: CURRENT RELAY MTG	EA	2											
X2 O 00088	5305-013-2727	SCREW, MACHINE: FIXED RESISTOR MTG	EA	1											
X2 O 00089		SCREW, MACHINE: GROUNDING AND CABLE CLAMP TO HEATSHIELD MTG MS35206-249 (96906)	EA	2										1	5
X2 O 00090	5305-984-7363	SCREW, MACHINE: HANDLE MTG	EA	4										1	18
X2 O 00091	5305-984-6194	SCREW, MACHINE: SELECTOR SWITCH BRACKET MTG	EA	2											
X2 O 00092		SHIELD, HEAT: ADJUSTABLE RESISTOR 458692 (36346)	EA	1											
X2 O 00093		SLIDER: ADJUSTABLE RESISTOR 458679 (36346)	EA	1											
P O 00094	5930-655-1508	SWITCH, TOGGLE: ARGON GAS, S2 90W30 (36346)	EA	1											
P O 00095	3431-859-4241	SWITCH, TOGGLE: MAIN LINE, S2 80W09 (36346)	EA	1											
P O 00096	5930-615-9182	SWITCH, TOGGLE: SELECTOR, 4 POLE, DOUBLE THROW W/NEUTRAL POSITION, S3 96W38 (36346)	EA	1											
P O 00097	5940-983-6086	TERMINAL BOARD: CONTROL ASSEMBLY, T1 91W66 (36346)	EA	1											
X2 O 00098		TERMINAL, LUG 93W77 (36346)	EA	38										1	42
X2 O 00099		TERMINAL, LUG: TORCH POWER CONNECTOR ASSEMBLY 98W84 (36346)	EA	1										1	41
P O 00100	3431-859-4242	VALVE, SOLENOID: GAS, GS 458677 (36346)	EA	1											

(1) SMR CODE	(2) FEDERAL STOCK NUMBER	(3) DESCRIPTION  REF NUMBER & MFR CODE	(4) USABLE ON CODE	(5) UNIT OF MEAS	(6) QTY INC IN UNIT	30-DAY DS MAINT ALLOWANCE			30-DAY GS MAINT ALLOWANCE			(8) 1-YR ALW	(9) DEPOT MAINT ALW	(10) ILLUS- TRATION FIG. ITEM NO. NO.		
						(a)	(b)	(c)	(a)	(b)	(c)	PER EQUIP CNTGY	PER EQUIP 100	(a)	(b)	
X2 O 00101	5310-082-1404	WASHER, FLAT: FIXED RESISTOR MTG		EA	2											
X2 O 00102	5310-187-1868	WASHER, FLAT: GROUNDING SCREW ATTACHING		EA	2									1	27	
X2 O 00103	5310-013-1044	WASHER, LOCK: ADJUSTABLE RESISTOR MTG		EA	1											
X2 O 00104	5310-559-0070	WASHER, LOCK: ADJUSTABLE RESISTOR MTG		EA	2											
X2 O 00105	5310-559-0070	WASHER, LOCK: ARMATURE RELAY MTG		EA	4											
X2 O 00106	5310-045-3299	WASHER, LOCK: CABINET ASSEMBLY BUMPER MTG		EA	4									1	2	
X2 O 00107	5310-559-0070	WASHER, LOCK: CABLE CLAMP TO CONTROL ASSEMBLY MTG		EA	3									2	3	
X2 O 00108	5310-559-0070	WASHER, LOCK: CURRENT RELAY MTG		EA	2											
X2 O 00109	5310-559-0070	WASHER, LOCK: FIXED RESISTOR MTG		EA	1											
X2 O 00110	5310-559-0070	WASHER, LOCK: GROUNDING SCREW ATTACHING		EA	1									1	28	
X2 O 00111	5310-527-3288	WASHER, LOCK: HANDLE MTG		EA	4									1	51	
X2 O 00112	5310-559-0070	WASHER, LOCK: SELECTOR SWITCH BRACKET MTG		EA	2											
M O 00113		WIRE, ELECTRICAL: BLACK (AS REQUIRED) MANUFACTURE FROM:		EA	0											
P O 00114	6145-160-5120	WIRE, ELECTRICAL (3 FT REQUIRED)		FT												
M O 00115		WIRE, ELECTRICAL: BLUE (AS REQUIRED) MANUFACTURE FROM:		EA	0											
P O 00116	6145-635-9290	WIRE, ELECTRICAL (8 FT REQUIRED)		FT												
M O 00117		WIRE, ELECTRICAL: BROWN (AS REQUIRED) MANUFACTURE FROM:		EA	0											
P O 00118	6145-669-6680	WIRE, ELECTRICAL (4 FT REQUIRED)		FT												
M O 00119		WIRE, ELECTRICAL: GREEN (AS REQUIRED) MANUFACTURE FROM:		EA	0											
P O 00120	6145-160-5118	WIRE, ELECTRICAL (1 FT REQUIRED)		FT												
M O 00121		WIRE, ELECTRICAL: ORANGE (AS REQUIRED) MANUFACTURE FROM:		EA	0											
P O 00122	6145-160-5133	WIRE, ELECTRICAL (7 FT REQUIRED)		FT												
M O 00123		WIRE, ELECTRICAL: RED (AS REQUIRED) MANUFACTURE FROM:		EA	0											
P O 00124	6145-669-6775	WIRE, ELECTRICAL (12 FT REQUIRED)		FT												
M O 00125		WIRE, ELECTRICAL: VIOLET (AS REQUIRED) MANUFACTURE FROM:		EA	0											
P O 00126	6145-295-0801	WIRE, ELECTRICAL (4 FT REQUIRED)		FT												
M O 00127		WIRE, ELECTRICAL: WHITE (AS REQUIRED) MANUFACTURE FROM:		EA	0											
P O 00128	6145-504-1310	WIRE, ELECTRICAL (3 FT REQUIRED)		FT												
M O 00129		WIRE, ELECTRICAL: YELLOW (AS REQUIRED) MANUFACTURE FROM:		EA	0											
P O 00130 00131	6145-160-5190	WIRE, ELECTRICAL (14 FT REQUIRED)  4408 - CONNECTING DEVICES		FT												
X2 O 00132		ADAPTER, STRAIGHT, PIPE: SOLENOID VALVE TO ARGON HOSE ASSEMBLY 3389 (36346)		EA	1									1	49	

(1)	(2)	(3)	(4)	(5)	(6)			(7)			(8)	(9)	(10)			
SMR	FEDERAL	DESCRIPTION			30-DAY DS MAINT			30-DAY GS MAINT			1-YR	DEPOT	ILLUS-			
CODE	STOCK		USABLE	UNIT	QTY	ALLOWANCE	ALLOWANCE	ALLOWANCE	ALLOWANCE	PER	ALW	MAINT	TRATION			
	NUMBER	REF NUMBER & MFR CODE	ON	OF	INC	(a)	(b)	(c)	(a)	(b)	(c)	PER	ALW	(a)	(b)	
			CODE	MEAS	IN	1-20	21-50	51-100	1-20	21-50	51-100	EQUIP	PER	FIG.	ITEM	
					UNIT							CNTGY	100	NO.	NO.	
													100			
													EQUIP			
P O	5975-669-9467	BOX CONNECTOR, ELECTRICAL: CONTACTOR CABINET 2522 (59730)		EA	1										3	3
P O	5975-296-6984	BOX CONNECTOR, ELECTRICAL: CONTACTOR CABINET 458673 (36346)		EA	2										3	2
P O	5975-669-9467	BOX CONNECTOR, ELECTRICAL: POWER CABLE, CONTACTOR CABLE, TORCH SWITCH CABLE TO CONTROL ASSEMBLY 2522 (59730)		EA	3										1	35
P O	5975-296-6984	BOX CONNECTOR, ELECTRICAL: WELDING CABLE 458673 (36346)		EA	1										1	10
P O	3431-977-5387	CABLE ASSEMBLY: CONTACTOR TO CONTROL ASSEMBLY 458697 (36346)		EA	1	*	*	2	*	*	2	6			5	
X1	00138	CABLE 458686 (36346)		EA	1											
X1	00139	TERMINAL, LUG 93W77 (36346)		EA	6											
P O	3431-859-4239	CABLE ASSEMBLY, POWER 459789 (36346)		EA	1	*	*	2	*	*	2	6			5	4
X2 O	00141	CABLE ASSEMBLY, POWER 521068 (36346)		EA	1											
X1	00142	ADAPTER, PA 90A23 (36346)		EA	1											
X1	00143	CABLE 458686 (36346)		EA	1											
X1	00144	CONNECTOR, PLUG: P1 90A24 (36346)		EA	1											
X1	00145	TERMINAL, LUG 93W77 (36346)		EA	3											
P O	3431-018-3097	CABLE, CONTACTOR TO POWER SUPPLY 458716 (36346)		EA	1	*	*	2	*	*	2	6			5	
P O	3431-018-3098	CABLE, CONTACTOR TO VOLTAGE CONTROL 458717 (36346)		EA	1	*	*	2	*	*	2	6			5	
P O	3431-018-3096	CABLE, VOLTAGE CONTROL 458705 (36346)		EA	1	*	*	2	*	*	2	6			5	
X1	00149	CABLE 458685 (36346)		EA	1											
X1	00150	CLAMP 95W39 (36346)		EA	1											
X1	00151	TERMINAL, LUG 93W77 (36346)		EA	1											
P O	3431-977-5396	CONNECTOR: ARGON HOSE 74S76 (36346)		EA	1	*	*	2	*	*	2	6			5	8
P O	3431-977-5392	CONNECTOR: TORCH POWER CABLE TO CONTROL ASSEMBLY 48V25 (36346)		EA	1	*	*	2	*	*	2	6			5	40
X2 O	00154	CONNECTOR: WORK PICKUP CABLE TO CONTROL ASSEMBLY 180W73 (36346)		EA	1										1	34
X2 O	00155	CORD ASSEMBLY, GROUND: TORCH TO CONTROL ASSEMBLY 528286 (36346)		EA	1											

(1)	(2)	(3)	(4)	(5)	(6)	(7)	(8)	(9)	(10)					
SMR	FEDERAL	DESCRIPTION	USABLE	UNIT	QTY	30-DAY DS MAINT	30-DAY GS MAINT	1-YR	DEPOT	ILLUS-				
CODE	STOCK		ON	OF	INC	ALLOWANCE	ALLOWANCE	ALW	MAINT	TRATION				
	NUMBER	REF NUMBER & MFR CODE	CODE	MEAS	UNIT	(a)	(b)	(c)	PER	(a)	(b)			
						1-20	21-50	51-100	1-20	21-50	51-100			
									CNTGY	EQUIP	100			
										PER	100			
										FIG.	ITEM			
										NO.	NO.			
P O 00156	3431-977-5388	CORD ASSEMBLY: TRIGGER SWITCH 459790 (36346)	EA	1	*	*	2	*	*	2	6	5	4	36
M O 00157		GASKET: CONTACTOR CABINET BOX CONNECTOR MTG 458710 (36346) MANUFACTURE FROM:	EA	2									3	28
P O 00158	5330-543-7098	RUBBER SHEET, SOLID (2 IN. X 2 IN. REQUIRED FOR EACH GASKET)	FT						SEE GRP 9501					
M O 00159		GASKET: CONTACTOR CABINET CONNECTOR MTG 458709 (36346) MANUFACTURE FROM:	EA	1									3	21
P O 00160	5330-543-7098	RUBBER SHEET, SOLID (1 1/2 IN. X 1 1/2 IN. REQUIRED)	FT						SEE GRP 9501					
M O 00161		GASKET: POWER CABLE, CONTACTOR CABLE, TORCH SWITCH CABLE CONNECTOR TO CONTROL ASSEMBLY 458709 (36346) MANUFACTURE FROM:	EA	4									1	37
P O 00162	5330-543-7098	RUBBER SHEET, SOLID (1 1/2 IN. X 1 1/2 IN. REQUIRED FOR EACH GASKET)	FT						SEE GRP 9501					
X2 O 00163		GASKET: TORCH POWER CABLE CONNECTOR TO CONTROL ASSEMBLY 458703 (36346)	EA	1									1	39
M O 00164		GASKET: WELDING CABLE BOX CONNECTOR TO CONTROL ASSEMBLY 458710 (36346) MANUFACTURE FROM:	EA	1									1	46
P O 00165	5330-543-7098	RUBBER SHEET, SOLID (2 IN. X 2 IN. REQUIRED)	FT						SEE GRP 9501					
X2 O 00166		GROMMET, RUBBER: ARGON HOSE CONNECTOR TO CONTROL ASSEMBLY 92W57 (36346)	EA	1									1	9
P O 00167	3431-859-4243	HOSE ASSEMBLY, ARGON GAS: TORCH POWER CABLE CONNECTOR TO SOLENOID VALVE 458704 (36346)	EA	1	*	*	2	*	*	2	6	3	1	43
X2 O 00168		INSULATOR: CONTACTOR TERMINAL BOARD TO PANEL, FISH PAPER, 2 1/2 IN. LG, 1 1/2 IN. W, 1/16 IN. THK 06W52 (36346)	EA	1									3	18
X2 O 00169		INSULATOR SLEEVE, POWER CABLE: TRANSFLEX PLASTIC TUBING 48N29 (36346)	EA	1									5	9
X2 O 00170		INSULATOR: TERMINAL BOARD 06N11 (36346)	EA	1									1	33
X2 O 00171		LOCKNUT: CONTACTOR CABINET BOX CONNECTOR MTG, 2 11/16 IN. OD, 1/2 IN. W, U/W 1.9685 NOMINAL SHAFT DIA 97W44 (36346)	EA	2									3	26
X2 O 00172		LOCKNUT: CONTACTOR CABINET CONNECTOR MTG 180W74 (36346)	EA	1									3	23
X2 O 00173	5310-262-6169	NUT, PLAIN, HEXAGON: CONTACTOR TERMINAL BOARD MTG	EA	4									3	17
X2 O 00174	5310-262-6169	NUT, PLAIN, HEXAGON: TERMINAL BOARD MTG	EA	4									1	30
X2 O 00175	5310-934-9757	NUT, PLAIN, HEXAGON: TORCH POWER CABLE CONNECTOR MTG	EA	4									1	1
X2 O 00176		SCREW, CURRENT: POWER CABLE TO CURRENT BODY (SPECIAL) 48N27 (36346)	EA	1									5	6

(1) SMR CODE	(2) FEDERAL STOCK NUMBER	(3) DESCRIPTION  REF NUMBER & MFR CODE	(4) USABLE ON CODE	(5) UNIT OF IN MEAS	(6) QTY INC IN UNIT	(6) 30-DAY DS MAINT ALLOWANCE			(7) 30-DAY GS MAINT ALLOWANCE			(8) 1-YR ALW PER EQUIP CNTGY	(9) DEPOT MAINT ALW EQUIP	(10) ILLUS- TRATION FIG. ITEM NO. NO.	
						(a)	(b)	(c)	(a)	(b)	(c)	PER 100	ALW 100	(a)	(b)
X2 O 00177	5305-013-2711	SCREW, MACHINE: CONTACTOR TERMINAL BOARD MTG	EA		3									3	20
X2 O 00178	5305-013-2719	SCREW, MACHINE: CONTACTOR TERMINAL BOARD MTG	EA		1									3	4
X2 O 00179	5305-889-3116	SCREW, MACHINE: GROUND CABLE TO MOTOR, HOUSING ATTACHING	EA		1										
X2 O 00180	5305-013-2711	SCREW, MACHINE: TERMINAL BOARD MTG	EA		3									1	16
X2 O 00181	5305-013-2719	SCREW, MACHINE: TERMINAL BOARD MTG	EA		1									1	32
X2 O 00182	5305-984-6194	SCREW, MACHINE: TORCH POWER CABLE CONNECTOR TO CONTROL ASSEMBLY MTG	EA		4									1	21
P O 00183	5940-983-6082	TERMINAL BOARD: CONTACTOR, T2 92W11 (36346)	EA		1	*	*	2	*	*	2	6	2	3	16
P O 00184	5940-983-6086	TERMINAL BOARD: CONTROL ASSEMBLY, T1 91W66 (36346)	EA		1	*	*	2	*	*	2	6	2	1	31
X2 O 00185		WASHER, FLAT: CONTACTOR CABINET BOX CONNECTOR MTG, STEEL, 1 3/8 IN. ID, 1 7/8 IN. OD, 0.0359 IN. THK 458719 (36346)	EA		2									3	27
X2 O 00186		WASHER, FLAT: CONTACTOR CABINET CONNECTOR MTG, STEEL, 7/8 IN. ID, 1 1/4 IN. OD, 0.0359 IN. THK 458718 (36346)	EA		1									3	22
X2 O 00187	5310-187-1851	WASHER, FLAT: POWER CABLE SCREW TO CURRENT BODY	EA		2									5	5
X2 O 00188	5310-013-1044	WASHER, LOCK: CONTACTOR TERMINAL BOARD MTG	EA		4									3	5
X2 O 00189	5310-013-1044	WASHER, LOCK: TERMINAL BOARD MTG	EA		4									1	12
X2 O 00190	5310-045-3299	WASHER, LOCK: TORCH POWER CABLE CONNECTOR MTG	EA		4									1	2
	00191	4409 - PROTECTIVE DEVICES, ELECTRICAL													
P O 00192	5920-280-4465	FUSE, CARTRIDGE: VOLTAGE CONTROL CABINET, ONE AMP, GLASS TUBE TYPE, 250V, F1, F2, F3 82W43 (36346)	EA		3	2	4	9	2	4	9	105	80	1	17
X2 O 00193		FUSEHOLDER: VOLTAGE CONTROL CABINET 458674 (36346)	EA		3									2	17
M O 00194		INSULATION: SPARE FUSE MOUNT TO CONTROL ASSEMBLY MANUFACTURE FROM:	EA		1									1	14
P O 00195	5970-242-5019	INSULATION SHEET, ELECTRICAL (2 IN. X 2 IN. REQUIRED)	SH												
X2 O 00196		MOUNT, FUSE: SPARE FUSE 96W10 (36346)	EA		1									1	15
X2 O 00197	5310-261-3109	NUT, PLAIN, CAP: SPARE FUSE MOUNT ATTACHING	EA		1									1	11
X2 O 00198	5305-013-2711	SCREW, MACHINE: SPARE FUSE MOUNT ATTACHING	EA		1									1	16
X2 O 00199	5310-013-1044	WASHER, LOCK: SPARE FUSE MOUNT ATTACHING	EA		1									1	12
	00200	4410 - SWITCHING, TIMING AND SPEED CONTROL													
X2 O 00201		BRACKET, MOUNTING: SELECTOR SWITCH 52N31 (36346)	EA		1									2	29
X2 O 00202		BUSHING, SEAL: ARGON GAS SWITCH AND MAIN LINE SWITCH MTG 458689 (36346)	EA		2									2	10



(1)	(2)	(3)	(4)	(5)	(6)			(7)			(8)	(9)	(10)		
SMR	FEDERAL	DESCRIPTION		QTY	30-DAY DS MAINT			30-DAY GS MAINT			1-YR	DEPOT	ILLUS-		
CODE	STOCK		USABLE	UNIT	ALLOWANCE			ALLOWANCE			ALW	MAINT	TRATION		
	NUMBER	REF NUMBER & MFR CODE	ON	OF	(a)	(b)	(c)	(a)	(b)	(c)	PER	ALW	(a)	(b)	
			CODE	MEAS	UNIT	1-20	21-50	51-100	1-20	21-50	51-100	100	100	FIG.	ITEM
												EQUIP	EQUIP	NO.	NO.
P O	3431-977-5382	CAPACITOR ASSEMBLY: TORCH, 0.05 UF, 600V, DC, C1		EA	1	*	2	2	*	2	2	20	20	4	32
	00203	521287 (36346)													
X2 O		CONTACTOR ASSEMBLY		EA	1									3	
	00204	521067 (36346)													
P O	5975-669-9467	BOX CONNECTOR, ELECTRICAL: CONTACTOR CABINET		EA	1										
	00205	2522 (59730)													
P O	5975-296-6984	BOX CONNECTOR, ELECTRICAL: CONTACTOR CABINET		EA	2										
	00206	458673 (36346)													
X2 O		CABINET: CONTACTOR		EA	1									3	1
	00207	521069 (36346)													
X2 O		COIL, MAGNET		EA	1									3	12
	00208	2507S1W29 (56365)													
X2 O		CONTACT, ELECTRICAL		EA	2									3	11
	00209	334D8G1 (56365)													
P O	3431-977-5385	CONTACTOR, WC		EA	1	*	2	2	*	2	2	12	10	3	9
	00210	488349 (36346)													
M O		GASKET: CONTACTOR CABINET		EA	2									3	24
	00211	MANUFACTURE FROM:													
P O	5330-202-3495	RUBBER STRIP, SOLID (9 IN. REQUIRED FOR EACH GASKET)		FT											
	00212														
M O		GASKET: CONTACTOR CABINET BOX CONNECTOR		EA	2										
	00213	MTG													
		458710 (36346)													
M O		GASKET: CONTACTOR CABINET CONNECTOR		EA	1										
	00214	MTG													
		458709 (36346)													
M O		GASKET: DOOR		EA	2									3	25
	00215	MANUFACTURE FROM:													
P O	5330-202-3495	RUBBER STRIP, SOLID (14 IN. REQUIRED FOR EACH GASKET)		FT											
	00216														
X2 O		INSULATOR: CONTACTOR TERMINAL BOARD TO		EA	1										
	00217	PANEL, FISH PAPER, 2 1/2 IN. LG, 1 1/2 IN. W, 1/16 IN. THK													
		06N52 (36346)													
X2 O		LOCKNUT: CONTACTOR CABINET BOX CONNECTOR		EA	1										
	00218	MTG													
		180W74 (36346)													
X2 O		LOCKNUT: CONTACTOR CABINET BOX CONNECTOR		EA	2										
	00219	MTG													
		97W44 (36346)													
X2 O		NUT, PLAIN, HEXAGON: CONTACT TIN		EA	4									3	10
	00220	63-300-121 (36346)													
X2 O	5310-262-6169	NUT, PLAIN, HEXAGON: CONTACTOR TERMINAL		EA	4										
	00221	BOARD MTG													
X2 O	5310-761-6882	NUT, PLAIN, HEXAGON: CONTACTOR TO MOUNT-		EA	4									3	6
	00222	ING PANEL													
X2 O		PANEL, MOUNTING		EA	1									3	8
	00223	457664 (36346)													
X1		PLATE, IDENTIFICATION		EA	1										
	00224	521074 (36346)													
X2 O		PLATE, IDENTIFICATION		EA	1										
	00225	521075 (36346)													

(1)	(2)	(3)	(4)	(5)	(6)	(7)	(8)	(9)	(10)					
SMR	FEDERAL	DESCRIPTION	USABLE	UNIT	QTY	30-DAY DS MAINT	30-DAY GS MAINT	1-YR	DEPOT	ILLUS-				
CODE	STOCK		ON	OF	INC	ALLOWANCE	ALLOWANCE	ALW	MAINT	TRATION				
	NUMBER	REF NUMBER & MFR CODE	CODE	MEAS	IN	(a)	(b)	(c)	PER	(a)	(b)			
					UNIT	1-20	21-50	51-100	1-20	21-50	51-100			
									CNTGY	EQUIP	FIG.	ITEM		
											NO.	NO.		
P O 00226	5905-101-6865	RESISTOR, FIXED, WIRE WOUND: CONTACTOR TERMINAL BOARD, 2000 OHM, 10 W, R4 95W22 (36346)	EA	1					SEE GRP 4411					
X2 O 00227	5305-071-2239	SCREW, CAP, HEXAGON HEAD: CONTACTOR TO MOUNTING PANEL	EA	4							3	14		
X2 O 00228	5305-068-0502	SCREW, CAP, HEXAGON HEAD: MOUNTING PANEL TO CABINET	EA	4							3	19		
X2 O 00229	5305-013-2719	SCREW, MACHINE: CONTACTOR TERMINAL BOARD MTG	EA	1					SEE GRP 4408					
X2 O 00230	5305-013-2711	SCREW, MACHINE: CONTACTOR TO TERMINAL BOARD MTG	EA	3					SEE GRP 4408					
X2 O 00231		SPRING, RETURN 2507X3 (56365)	EA	1										
P O 00232	5940-983-6082	TERMINAL BOARD: CONTACTOR, T2 92W11 (36346)	EA	1					SEE GRP 4408					
X2 O 00233		TERMINAL, LUG 488706 (36346)	EA	2										
X2 O 00234		TERMINAL, LUG 93W77 (36346)	EA	6										
X2 O 00235	5310-012-0386	WASHER, FLAT: CONTACTOR AND PANEL MTG	EA	8							3	13		
X2 O 00236		WASHER, FLAT: CONTACTOR CABINET BOX, CONNECTOR MTG 458719 (36346)	EA	2					SEE GRP 4408					
X2 O 00237		WASHER, FLAT: CONTACTOR CABINET CONNECTOR MTG 458718 (36346)	EA	1					SEE GRP 4408					
X2 O 00238	5310-582-5965	WASHER, LOCK: CONTACTOR AND PANEL MTG	EA	8							3	7		
X2 O 00239	5310-013-1044	WASHER, LOCK: CONTACTOR TERMINAL BOARD MTG	EA	4					SEE GRP 4408					
M O 00240		WIRE, ELECTRICAL: BLACK MANUFACTURE FROM:	EA	1										
P O 00241	6145-160-5120	WIRE, ELECTRICAL (10 IN. REQUIRED)	FT						SEE GRP 9501					
M O 00242		WIRE, ELECTRICAL: GREEN MANUFACTURE FROM:	EA	1										
P O 00243	6145-160-5118	WIRE, ELECTRICAL (3 IN. REQUIRED)	FT						SEE GRP 9501					
M O 00244		WIRE, ELECTRICAL: WHITE MANUFACTURE FROM:	EA	1										
P O 00245	6145-504-1310	WIRE, ELECTRICAL (12 IN. REQUIRED)	FT						SEE GRP 9501					
X2 O 00246		GASKET: SOLENOID VALVE TO CONTROL ASSEMBLY 458714 (36346)	EA	1							1	48		
X2 O 00247		NUT, CAP: ARGON GAS SWITCH AND MAIN LINE SWITCH MTG 458688 (36346)	EA	2							2	11		
X2 O 00248	5310-934-9757	NUT, PLAIN, HEXAGON: ARMATURE RELAY AND SELECTOR SWITCH BRACKET MTG	EA	6							2	2		
X2 O 00249	5310-934-9757	NUT, PLAIN, HEXAGON: CURRENT RELAY MTG	EA	2							1	1		
X2 O 00250		PLATE: SOLENOID VALVE TO CONTROL ASSEMBLY 458713 (36346)	EA	1							1	50		
P O 00251	5945-173-8320	RELAY, ARMATURE: PROTECTIVE, PR 80N29 (36346)	EA	1	*	*	2	*	*	2	6	5	2	21
P O 00252	5945-846-0433	RELAY, ARMATURE: WELD START AND AUXILIARY WELD START, 24V, DC, RA, RB 97W55 (36346)	EA	2	*	2	2	*	2	2	12	10	2	4

(1) SMR CODE	(2) FEDERAL STOCK NUMBER	(3) DESCRIPTION  REF NUMBER & MFR CODE	(4) USABLE ON CODE	(5) UNIT OF MEAS	(6) QTY INC IN UNIT	(6) 30-DAY DS MAINT ALLOWANCE			(7) 30-DAY GS MAINT ALLOWANCE			(8) 1-YR ALW PER 100 EQUIP CNTGY	(9) DEPOT MAINT ALW PER 100 EQUIP	(10) ILLUS- TRATION	
						(a)	(b)	(c)	(a)	(b)	(c)	FIG. NO.	ITEM NO.		
P O 00253	5945-859-4497	RELAY, CURRENT: WELD CURRENT, RC 458687 (36346)	EA	1	*	*	2	*	*	2	6	5	1	38	
X2 O 00254	5305-013-2688	SCREW, MACHINE: ARMATURE RELAY MTG	EA	4									2	18	
X2 O 00255		SCREW, MACHINE: CURRENT RELAY MTG MS35206-249 (96906)	EA	2									1	5	
X2 O 00256	5305-984-6194	SCREW, MACHINE: SELECTOR SWITCH BRACKET AND ARMATURE RELAY MTG	EA	4									2	13	
X2 O 00257	5305-984-6193	SCREW, MACHINE: SOLENOID VALVE MTG	EA	2									1	24	
X2 O 00258	5305-019-2662	SCREW, MACHINE: TRIGGER SWITCH MTG	EA	2									4	37	
P O 00259	5930-239-3661	SWITCH, PUSH: INCHING, S4 98W66 (36346)	EA	1	*	*	2	*	*	2	6	5	4	30	
P O 00260	5930-977-8915	SWITCH, SENSITIVE: TRIGGER, S5 181W34 (36346)	EA	1	*	*	2	*	*	2	6	5	4	38	
P O 00261	5930-655-1508	SWITCH, TOGGLE: ARGON GAS, S2 90W30 (36346)	EA	1	*	*	2	*	*	2	6	5	2	5	
P O 00262	3431-859-4241	SWITCH, TOGGLE: MAIN LINE, S1 80W09 (36346)	EA	1	*	*	2	*	*	2	6	5	2	20	
P O 00263	5930-615-9182	SWITCH, TOGGLE: SELECTOR, 4 POLE, DOUBLE THROW, W/NEUTRAL POSITION, S3 96W38 (36346)	EA	1	*	*	2	*	*	2	6	5	2	28	
P O 00264	3431-859-4242	VALVE, SOLENOID: GAS, GS 458677 (36346)	EA	1	*	2	2	*	2	2	12	10	1	47	
X2 O 00265	5310-559-0070	WASHER, LOCK: ARMATURE RELAY AND SELECTOR SWITCH BRACKET	EA	6									2	3	
X2 O 00266	5310-559-0070	WASHER, LOCK: CURRENT RELAY MTG	EA	2									1	28	
X2 O 00267		4411 - RESISTOR COMPONENTS													
X2 O 00268		GROMMET, RUBBER: HEAT SHIELD 97 (70485)	EA	1									1	6	
X2 O 00269		KNOB: VARIABLE RESISTOR WELDING CONTROL 89W81 (36346)	EA	1									2	8	
X2 O 00270	5310-934-9757	NUT, PLAIN, HEXAGON: ADJUSTABLE RESISTOR MTG	EA	2									1	1	
X2 O 00271	5310-262-6169	NUT, PLAIN, HEXAGON: ADJUSTABLE RESISTOR MTG	EA	4									2	31	
X2 O 00272	5310-262-6169	NUT, PLAIN, HEXAGON: CONTACTOR FIXED RESISTOR MTG	EA	1									3	17	
P O 00273	5905-834-7831	RESISTOR, ADJUSTABLE: W/BRACKETS, 250 OHM, 200 W, R1 89W80 (36346)	EA	1	*	2	2	*	2	2	20	20	1	4	
P O 00274	5905-173-6693	RESISTOR, ADJUSTABLE: 600 OHM, 25 W, R2 0373 (44655)	EA	1	*	2	2	*	2	2	20	20	2	34	
P O 00275	5905-101-6865	RESISTOR, FIXED, WIRE WOUND: CONTACTOR TERMINAL BOARD, 2000 OHM, 10 W, R4 95W22 (36346)	EA	1	*	2	2	*	2	2	20	20	3	15	
P O 00276	5905-686-2872	RESISTOR, FIXED, WIRE WOUND: 5 OHM, 5 W, R3 1D48F5 (44655)	EA	1	*	2	2	*	2	2	20	20	2	37	
P O 00277	5905-549-5659	RESISTOR, VARIABLE: WELDING CONTROL, WIRE FEED MOTOR CIRCUIT, 75 OHM, 25 W, VR 0150 (44655)	EA	1	*	2	2	*	2	2	20	20	2	6	
X2 O 00278	5305-984-6194	SCREW, MACHINE: ADJUSTABLE RESISTOR MTG	EA	2									1	21	

(1) SMR CODE	(2) FEDERAL STOCK NUMBER	(3) DESCRIPTION  REF NUMBER & MFR CODE	(4) USABLE ON CODE	(5) UNIT OF MEAS	(6) QTY INC IN UNIT	(7) 30-DAY DS MAINT ALLOWANCE			(8) 30-DAY GS MAINT ALLOWANCE			(9) 1-YR DEPOT MAINT ALW	(10) ILLUS- TRATION FIG. NO.	(11) ITEM NO.
						(a)	(b)	(c)	(a)	(b)	(c)			
X2 O 00279	5305-019-2207	SCREW, MACHINE: ADJUSTABLE RESISTOR MTG	EA		1								2	14
X2 O 00280	5305-013-2727	SCREW, MACHINE: FIXED RESISTOR MTG	EA		1								2	12
X2 O 00281		SHIELD, HEAT: ADJUSTABLE RESISTOR 458692 (36346)	EA		1								1	7
X2 O 00282		SLIDER: ADJUSTABLE RESISTOR 458679 (36346)	EA		1								1	45
X2 O 00283		WASHER, CENTERING: ADJUSTABLE RESISTOR MTG, 3/16 IN. ID, 1/2 IN. OD, 1/64 IN. THK, 5/64 IN. THK OF CONCAVED PORTION 92W58 (36346)	EA		4								1	2
X2 O 00284	5310-082-1404	WASHER, FLAT: FIXED RESISTOR MTG	EA		2								2	36
X2 O 00285	5310-045-3299	WASHER, LOCK: ADJUSTABLE RESISTOR MTG	EA		2								1	3
X2 O 00286	5310-013-1044	WASHER, LOCK: ADJUSTABLE RESISTOR MTG	EA		1								2	35
X2 O 00287	5310-579-0070	WASHER, LOCK: FIXED RESISTOR MTG	EA		1								2	38
M O 00288		WASHER, MICA: ADJUSTABLE RESISTOR MTG 97W14 (36346) MANUFACTURE FROM:	EA		2								2	33
P O 00289	5970-242-5019	INSULATION SHEET, ELECTRICAL (2 IN. X 2 IN. REQUIRED FOR EACH WASHER)	SH									SEE GRP 9501		
	00290	4413 - RECTIFIER COMPONENTS												
X2 O 00291		BRACKET, MOUNTING: RECTIFIER 458676 (36346)	EA		2								2	24
X2 O 00292	5310-934-9757	NUT, PLAIN, HEXAGON: RECTIFIER BRACKET MTG	EA		4								2	2
X2 O 00293	5310-042-6903	NUT, PLAIN, HEXAGON: RECTIFIER TO BRACKET MTG	EA		2								2	23
P O 00294	6130-859-4496	RECTIFIER: DRY, SR 458675 (36346)	EA		1	*	2	2	*	2	2	12	10	2
X2 O 00295	5305-012-1832	SCREW, MACHINE: RECTIFIER BRACKET MTG	EA		4								2	19
X2 O 00296	5310-262-4481	WASHER, FLAT: RECTIFIER BRACKET MTG	EA		4								2	26
X2 O 00297	5310-559-0070	WASHER, LOCK: RECTIFIER BRACKET MTG	EA		4								2	3
	00298	4415 - HEAD, TORCH AND GUN UNITIZED COMPONENTS												
P F 00299	3431-859-4232	PARTS KIT, BRUSH AND SPRING: MOTOR 56W71 (36346)	EA		1	2	4	8	2	4	8	100	100	
X1 00300		BRUSH, SPRING AND TERMINAL ASSEMBLY 627-1049 (36346)	EA		2								4	27
X2 O 00301		TORCH ASSEMBLY 521180 (36346)	EA		1									
X2 O 00302		BLOCK AND LEAD: CURRENT PICKUP 48V36 (36346)	EA		1								4	12
X2 O 00303	5305-717-6955	SETSCREW: BLOCK AND LEAD ATTACHING	EA		1								4	11
X2 O 00304		TERMINAL, LUG: BLOCK AND LEAD TO CURRENT 93W77 (36346)	EA		1								4	17
X2 O 00305		BLOCK, MOUNTING: CONTACT SHOE 48N83 (36346)	EA		1								4	13
P O 00306	3431-859-4240	BODY, CURRENT 48V03 (36346)	EA		1	*	*	2	*	*	2	6	5	5
P O 00307	3431-977-5383	BOOT, HANDLE 56N32 (36346)	EA		1	*	*	2	*	*	2	6	5	5

(1) SMR CODE	(2) FEDERAL STOCK NUMBER	(3) DESCRIPTION  REF NUMBER & MFR CODE	(4) USABLE ON CODE	(5) UNIT OF MEAS	(6) QTY INC IN UNIT	(7) 30-DAY DS MAINT ALLOWANCE			(7) 30-DAY GS MAINT ALLOWANCE			(8) 1-YR ALW PER EQUIP CNTGY	(9) DEPOT MAINT ALW PER EQUIP	(10) ILLUS- TRATION	
						(a)	(b)	(c)	(a)	(b)	(c)			(a)	(b)
X2 O 00308		BUSHING, SLEEVE: INSULATOR PLATE 48N20 (36346)		EA	1									5	23
P O 00309	3431-893-3128	BUSHING, SLEEVE: INLET GUIDE 48N56 (36346)		EA	1	2	2	4	2	2	4	48	5	4	1
P O 00310	3431-893-3130	BUSHING, SLEEVE: OUTLET GUIDE 48N59 (36346)		EA	1	2	2	4	2	2	4	48	5	4	19
P O 00311	3431-859-4239	CABLE ASSEMBLY, POWER 459789 (36346)		EA	1				SEE GRP 4408						
P O 00312	3431-977-5382	CAPACITOR ASSEMBLY: TORCH, .05 UF, 600V, DC, C1 521287 (36346)		EA	1				SEE GRP 4410						
X2 O 00313		CLAMP, CABLE: TORCH 48N49 (36346)		EA	1									6	20
X2 O 00314		CORD ASSEMBLY, GROUND: TORCH TO CONTROL ASSEMBLY 521286 (36346)		EA	1				SEE GRP 4408						
P O 00315	3431-977-5388	CORD ASSEMBLY: TRIGGER SWITCH 459790 (36346)		EA	1				SEE GRP 4408						
X2 O 00316		COVER ASSEMBLY: SPOOL ENCLOSURE 48V45 (36346)		EA	1									6	11
P O 00317	3431-977-5391	DISC ASSEMBLY, FRICTION 48V17 (36346)		EA	1	*	*	2	*	*	2	6	5	6	16
X1 00318		ARM, FRICTION DISC 48N38 (36346)		EA	1										
X1 00319		DISC, FRICTION 48N37 (36346)		EA	1										
X1 00320		SCREW, TAPPING, THREAD FORMING: FRICTION DISC TO ARM ATTACHING		EA	2										
X2 O 00321		ENCLOSURE, SPOOL 521289 (36346)		EA	1									6	4
X2 O 00322		ENDPLATE: HANDLE 48N21 (36346)		EA	1									4	31
X2 O 00323		GASKET: INSULATOR PLATE TO MOTOR HOUSING 48N19 (36346)		EA	1									5	25
X2 F 00324		HANDLE, TORCH 48V06 (36346)		EA	1									4	28
X2 O 00325		HOUSING, FRONT 48N11 (36346)		EA	1									5	13
X2 F 00326		HOUSING, MOTOR 48V02 (36346)		EA	1									4	2
X2 O 00327		INSULATOR, PLATE 48N18 (36346)		EA	1									5	24
X2 O 00328		INSULATOR SLEEVE: BLOCK AND LEAD, MIRAC TUBING, 0.205 IN. ID, 0.237 IN. OD, 1 IN. LG 48N78 (36346)		EA	1									4	18
P O 00329	3431-977-5395	INSULATOR SLEEVE: CURRENT BODY 56N17 (36346)		EA	1	*	2	2	*	2	2	15	15	5	11
X2 O 00330		INSULATOR SLEEVE, POWER CABLE: TRANSFLEX PLASTIC TUBING 48N29 (36346)		EA	1				SEE GRP 4408						
X2 O 00331		INSULATOR SLEEVE: WIRE LEADS TO HANDLE, TRANSFLEX TUBING, CLEAR, 3/8 IN. ID, 7/16 IN. OD, 1 5/8 IN. LG 48N51 (36346)		EA	2									4	39

(1) SMR CODE	(2) FEDERAL STOCK NUMBER	(3) DESCRIPTION  REF NUMBER & MFR CODE	(4) USABLE ON CODE	(5) UNIT OF MEAS	(6) QTY INC IN UNIT	(7) 30-DAY DS MAINT ALLOWANCE			(7) 30-DAY GS MAINT ALLOWANCE			(8) 1-YR ALW PER 100 EQUIP CNTGY	(9) DEPOT MAINT ALW PER 100 EQUIP	(10) ILLUS- TRATION FIG. NO. (a) (b) ITEM NO.	
						(a)	(b)	(c)	(a)	(b)	(c)			(a)	(b)
P F 00332	6105-893-3139	MOTOR, DIRECT CURRENT 48V14 (36346) (INCLUDES COMPONENTS OF PARTS KIT, STOCK NO. 3431-859-4232)	EA	1	*	*	2	*	*	2	6	5	4	40	
A O 00333		NOZZLE ASSEMBLY: TORCH 521179 (36346)	EA	1											
P O 00334	3431-981-1033	HOLDER, NOZZLE 55N78 (36346)	EA	1	*	*	2	*	*	2	6	5	5	20	
P O 00335	3431-977-5381	NOZZLE, TORCH 55N88 (36346)	EA	1	2	4	8	2	4	8	100	100	5	17	
P O 00336	3431-977-5393	RETAINER, NOZZLE LOCKING 55N89 (36346)	EA	1	*	2	2	*	2	2	20	20	5	18	
P O 00337	3431-977-5394	SPRING, NOZZLE LOCKING 55N90 (36346)	EA	1	2	4	8	2	4	8	100	100	5	19	
X2 O 00338	5310-934-9757	NUT, PLAIN, HEXAGON: THUMBSCREW LOCKING	EA	1									4	4	
X2 O 00339		PLATE, NAME: TORCH ASSEMBLY 95N37 (36346)	EA	1						SEE GRP 2210					
P O 00340	3431-893-3123	PRESSURE ROLL ASSEMBLY 48V05 (36346)	EA	1	*	2	2	*	2	2	20	15	4	7	
X2 O 00341		RETAINER, CAP: FRICTION DISC ASSEMBLY CENTERING, NYLON ROD, 0.027 IN. ID, 3/8 IN. OD, 0.031 IN. THK, STEPPED, 2ND STEP, 0.234 IN. OD, 0.031 IN. THK 48N43 (36346)	EA	1									6	15	
X2 O 00342		RETAINER: FEED ROLL ATTACHING, NYLON, 1/8 IN. ID, 1/2 IN. OD, 1/8 IN. THK, STEPPED, 2ND STEP, 0.374 IN. OD, 0.078 IN. THK 48N75 (36346)	EA	1									4	22	
X2 O 00343		RING, LOCATING: BRAKE SCREW 48N39 (36346)	EA	1									6	7	
P O 00344	3431-977-5389	ROLLER, WIRE: SPOOL ENCLOSURE 48N45 (36346)	EA	1	2	2	2	2	2	2	24	20	6	18	
X2 O 00345		SCREW, BRAKE: SPOOL ENCLOSURE 48V18 (36346)	EA	1									6	9	
X2 O 00346		SCREW, CURRENT: POWER CABLE TO CURRENT BODY (SPECIAL) 48N27 (36346)	EA	1						SEE GRP 4408					
X2 O 00347	5305-984-4976	SCREW, MACHINE: BLOCK MTG	EA	1									4	16	
X2 O 00348	5305-889-3116	SCREW, MACHINE: CABLE SHIELD MTG	EA	5									5	1	
X2 O 00349	5305-984-4976	SCREW, MACHINE: CABLE SHIELD MTG	EA	1									5	3	
X2 O 00350	5305-013-2631	SCREW, MACHINE: COVER ASSEMBLY TO SPOOL ENCLOSURE MTG	EA	3									6	13	
X2 O 00351		SCREW, MACHINE: CURRENT PICKUP BLOCK AND LEAD ATTACHING MS35214-25 (96906)	EA	1									5	8	
X2 O 00352	5305-013-2688	SCREW, MACHINE: ENDPLATE TO HANDLE MTG	EA	4									4	29	
X2 O 00353	5305-290-2046	SCREW, MACHINE: FEED ROLL AND CURRENT SLEEVE MTG	EA	1									4	20	
X2 O 00354	5305-013-2735	SCREW, MACHINE: FRICTION DISC ASSEMBLY ATTACHING	EA	1									6	14	
X2 O 00355	5305-013-2727	SCREW, MACHINE: FRONT HOUSING ATTACHING	EA	4									5	15	
X2 O 00356	5305-889-3116	SCREW, MACHINE: GROUND CABLE TO MOTOR HOUSING ATTACHING	EA	1						SEE GRP 4408					

(1) SMR CODE	(2) FEDERAL STOCK NUMBER	(3) DESCRIPTION  REF NUMBER & MFR CODE	(4) USABLE ON CODE	(5) QTY INC IN UNIT	(6) 30-DAY DS MAINT ALLOWANCE			(7) 30-DAY GS MAINT ALLOWANCE			(8) 1-YR ALW PER 100 EQUIP CNTGY	(9) DEPOT MAINT ALW PER 100 EQUIP	(10) ILLUS- TRATION FIG. ITEM NO. NO.	
					(a)	(b)	(c)	(a)	(b)	(c)			(a)	(b)
X2 F 00357	5305-013-2705	SCREW, MACHINE: HANDLE TO MOTOR AND MOTOR TO HOUSING MTG	EA	8									4	26
X2 O 00358	5305-207-3239	SCREW, MACHINE: HOLDER TO SLEEVE ASSEMBLY ATTACHING	EA	3									5	21
X2 O 00359	5305-984-6210	SCREW, MACHINE: MTG SHAFT TO SPOOL ENCLOSURE	EA	1									6	1
X2 O 00360		SCREW, MACHINE: NAMEPLATE MTG MS24629-11 (96906)	EA	2										
X2 O 00361	5305-013-2723	SCREW, MACHINE: PRESSURE ROLL ASSEMBLY MTG	EA	1									4	6
X2 O 00362	5305-012-1832	SCREW, MACHINE: SPOOL ENCLOSURE TO MOTOR HOUSING ATTACHING	EA	5									6	19
X2 O 00363	5305-984-6192	SCREW, MACHINE: TORCH CABLE CLAMP MTG	EA	2									6	22
X2 O 00364	5305-013-2636	SCREW, MACHINE: TRIGGER ASSEMBLY MTG	EA	4									4	33
X2 O 00365	5305-019-2662	SCREW, MACHINE: TRIGGER SWITCH MTG	EA	2										
P O 00366	5305-977-5512	SCREW, SELF-LOCKING: CONTACT TUBE 48V09 (36346)	EA	1	*	*	2	*	*	2	10	10	5	14
X2 O 00367	5305-719-5339	SETSCREW: INLET GUIDE BUSHING ATTACHING	EA	1									4	3
X2 O 00368	5305-719-5353	SETSCREW: OUTLET GUIDE BUSHING	EA	1									4	10
X2 O 00369		SHAFT ASSEMBLY: FEED ROLL AND CURRENT SLEEVE MTG 48V15 (36346)	EA	1									4	24
X2 O 00370		SHAFT, MOUNTING: SPOOL 48V16 (36346)	EA	1									6	6
X2 O 00371		SHIELD, CABLE 48N30 (36346)	EA	1									5	2
M O 00372		SHIM: COVER ASSEMBLY TO SPOOL ENCLOSURE MANUFACTURE FROM:	EA	5									6	10
P O 00373	5330-599-7216	PAPER, GASKET (1 3/4 BY 3/8 IN. REQUIRED FOR EACH SHIM)	FT											
P O 00374	3431-893-3134	SHOE, CONTACT 48N82 (36346)	EA	1	*	*	2	*	*	2	10	10	4	15
P O 00375	3431-893-3126	SLEEVE, FEED ROLL AND CURRENT 48V35 (36346)	EA	1	2	2	4	2	2	4	50	50	4	23
P O 00376	3431-859-4227	SLEEVE, INSULATOR: NOZZLE ASSEMBLY 48V08 (36346)	EA	1	*	2	2	*	2	2	15	15	5	12
X2 O 00377		SPACER: CURRENT PICKUP BLOCK AND LEAD, BRASS, 5/16 IN. OD, 7/64 IN. THK, NO. 27 DRILL SIZE ID 48N74 (36346)	EA	1									5	7
P O 00378	5340-893-3133	SPRING, HELICAL, COMPRESSION: SHOE TO BLOCK 48N85 (36346)	EA	1	*	*	2	*	*	2	10	10	4	14
P O 00379	3431-977-5390	SPRING, TRIGGER 48N50 (36346)	EA	1	*	2	2	*	2	2	20	20	4	34
X2 O 00380		SPRING, WELDING SET: FRICTION DISC 48N42 (36346)	EA	1									6	8
P O 00381	5930-239-3661	SWITCH, PUSH: INCHING, S4 98W66 (36346)	EA	1										
P O 00382	5930-977-8915	SWITCH, TRIGGER: TRIGGER, S5 181W34 (36346)	EA	1										

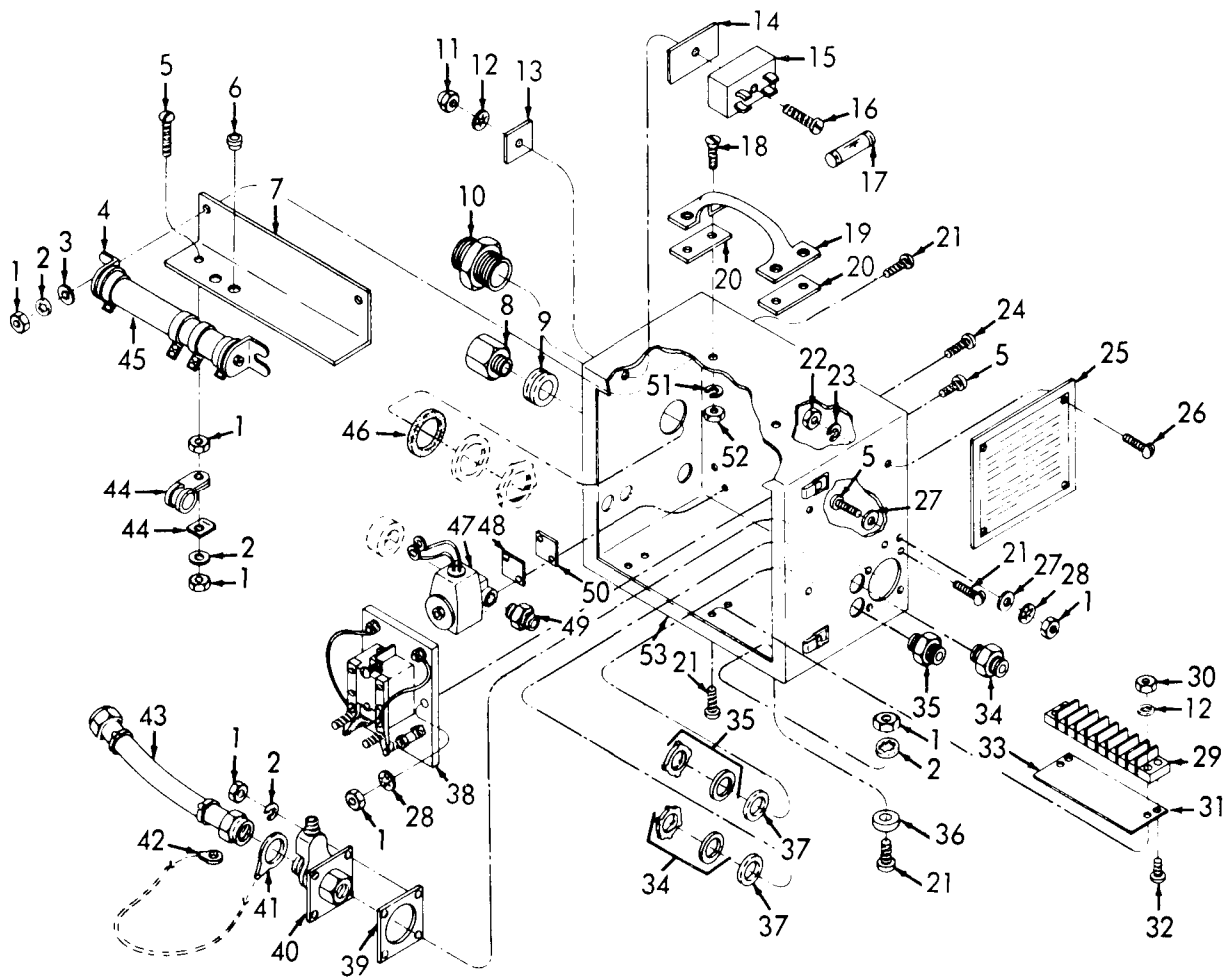
(1) SMR CODE	(2) FEDERAL STOCK NUMBER	(3) DESCRIPTION  REF NUMBER & MFR CODE	(4) USABLE ON CODE	(5) UNIT OF MEAS	(6) 30-DAY DS MAINT ALLOWANCE			(7) 30-DAY GS MAINT ALLOWANCE			(8)	(9)	(10) ILLUS- TRATION		
					(a)	(b)	(c)	(a)	(b)	(c)	1-YR ALW PER 100 EQUIP CNTGY	DEPOT MAINT ALW PER 100 EQUIP	(a)	(b)	
X2 O 00383		THUMBSCREW: FEED ROLL ADJUSTING, CADMIUM OR ZINC PLATED, NO. 8-32 THD SIZE, 5/8 IN. LG 48N48 (36346)		EA	1								4	5	
X2 O 00384		TRIGGER ASSEMBLY 48V07 (36346)		EA	1								4	35	
P O 00385	3431-893-3124	TUBE, WIRE GUIDE: CONTACT 48N53 (36346)		EA	1	11	21	42	11	21	42	1000	100	5	16
X2 O 00386		WASHER, FLAT: ARM TO SPOOL ENCLOSURE, NYLON SHEET, 3/8 IN. OD, 3/32 IN. THK, NO.27 DRILL ID 49N82 (36346)		EA	1									6	17
X2 O 00387	5310-950-1310	WASHER, FLAT: COVER ASSEMBLY TO SPOOL ENCLOSURE MTG		EA	3									6	12
X2 O 00388		WASHER, FLAT: FEED ROLL SHAFT TO MOTOR, TEFLON SHEET, 0.257 IN. ID, 3/4 IN. OD, 0.031 IN. THK 48N33 (36346)		EA	1									4	25
X2 O 00389		WASHER, FLAT: MTG SHAFT TO SPOOL ENCLOSURE MS27183-8 (96906)		EA	1									6	3
X2 O 00390	5310-187-1851	WASHER, FLAT: POWER CABLE SCREW TO CURRENT BODY		EA	2						SEE GRP 4408				
X2 O 00391	5310-543-2410	WASHER, LOCK: FEED ROLL AND CURRENT SLEEVE MTG		EA	1									4	21
X2 O 00392	5310-043-2226	WASHER, LOCK: MTG SHAFT TO SPOOL ENCLO- SURE		EA	1									6	2
X2 O 00393	5310-045-3299	WASHER, LOCK: TORCH CABLE CLAMP MTG		EA	2									6	21
X2 O 00394		WASHER, SPACING: SPOOL MTG SHAFT, PLAS- TIC, 0.343 IN. ID, 13/16 IN. OD, 0.109 IN. THK 48N36 (36346)		EA	1									6	5
00395		GROUP 47 - GAGES (NON-ELECTRICAL) WEIGHING AND MEASURING DEVICES 4702 - GAGES													
P O 00397	6685-981-1194	GAGE, PRESSURE 627Y14 (36346)		EA	1	*	*	2	*	*	2	10	10	7	1
P O 00398	5355-981-1193	WINDOW, DIAL: PRESSURE 72A70 (36346)		EA	1	*	*	2	*	*	2	10	10	7	2
00399		4705 - FLOW METERS AND REGULATORS													
P O 00400	3431-977-5386	REGULATOR AND FLOW METER: ARGON 04X34 (36346)		EA	1	*	*	2	*	*	2	6	10		
X1 00401		BODY: ARGON REGULATING TUBE 80Z50 (36346)		EA	1										
X1 00402		BODY: REGULATOR 80Z51 (36346)		EA	2										
X1 00403		BODY: RELIEF VALVE 80Z83 (36346)		EA	2										
X1 00404		CAP: REGULATOR, FRONT 31Z64 (36346)		EA	1										
X1 00405		CAP: REGULATOR, FRONT 31Z75 (36346)		EA	1										
X1 00406		CAP: RELIEF VALVE 31Z73 (36346)		EA	2										
X1 00407		CAP: SECOND STAGE 31Z63 (36346)		EA	2										



(1)	(2)	(3)	(4)	(5)	(6)	(7)	(8)	(9)	(10)		
SMR	FEDERAL	DESCRIPTION	USABLE	UNIT	QTY	30-DAY DS MAINT	30-DAY GS MAINT	1-YR	DEPOT	ILLUS-	
CODE	STOCK		ON	OF	INC	ALLOWANCE	ALLOWANCE	ALW	MAINT	TRATION	
	NUMBER	REF NUMBER & MFR CODE	CODE	MEAS	IN	(a)	(b)	(c)	(a)	(b)	
						1-20	21-50	51-100	1-20	21-50	
									51-100	CNTGY	
									EQUIP	100	
									PER	ALW	
									100	PER	
									EQUIP	100	
									EQUIP	FIG.	
										NO.	
										ITEM	
										NO.	
X1		DIAPHRAGM: REGULATOR BODY		EA	2						
00408		30Z58 (36346)									
P O	6685-981-1194	GAGE, PRESSURE		EA	1				SEE GRP	4702	
00409		627Y14 (36346)									
X1		GASKET: BODY		EA	2						
00410		77Z69 (36346)									
X1		GLAND: CALIBRATED TUBE ASSEMBLY		EA	1						
00411		82Z43 (36346)									
X1		GUARD, TUBE		EA	1					7	7
00412		68Z70 (36346)									
X1		GUIDE: FRONT CAP		EA	2						
00413		77Z72 (36346)									
X1		GUIDE: NOZZLE		EA	2						
00414		77Z73 (36346)									
X1		NOZZLE: REGULATOR		EA	2						
00415		02Z21 (36346)									
X1		NOZZLE: RELIEF VALVE		EA	2						
00416		32Z65 (36346)									
X1		NUT, PLAIN, CAP: REGULATOR		EA	2						
00417		6372-0100 (36346)									
X1		NUT, PLAIN, HEXAGON: YOKE ATTACHING		EA	2						
00418		6310-0927 (36346)									
X1		O RING: ARGON REGULATING SLEEVE, COMP,		EA	1						
00419		3/8 IN. ID, 9/16 IN. OD, 3/32 IN. W									
		85W37 (36346)									
X1		PACKING, PREFORMED: REGULATOR, COMPOSI-		EA	2						
00420		TION, 3/8 IN. ID, 9/16 IN. OD, 3/32 IN.									
		THK									
		84W85 (36346)									
X2 O		PACKING, PREFORMED: TUBE TO REGULATOR		EA	1					7	3
00421		84W84 (36346)									
X1		PLATE: DIAPHRAGM		EA	2						
00422		30Z57 (36346)									
X1		SCREEN: TUBE BODY, BODY FLOAT BALL		EA	6						
00423		05Z36 (36346)									
X1		SCREW: FRONT CAP ATTACHING		EA	8						
00424		6170-6911 (36346)									
X1		SCREW, MACHINE: FRONT CAP ATTACHING		EA	4						
00425		6170-6882 (36346)									
X1		SCREW, MACHINE: SECOND STAGE CAP ATTACH-		EA	8						
00426		ING									
X1		SCREW, MACHINE: TUBE GUARD MTG		EA	1					7	8
00427		6170-0851 (36346)									
X1		SCREW, MACHINE: TUBE GUARD MTG		EA	2					7	6
00428		6170-0878 (36346)									
X1		SEAT: FIRST STAGE NOZZLE		EA	2						
00429		32Z60 (36346)									
X1		SEAT: RELIEF VALVE		EA	2						
00430		33Y56 (36346)									
X1		SETSCREW: PRESSURE ADJUSTING, SPECIAL		EA	1						
00431		34Z63 (36346)									
X1		SLEEVE: ARGON STEM ASSEMBLY REGULATING		EA	1						
00432		92Z01 (36346)									

(1) SMR CODE	(2) FEDERAL STOCK NUMBER	(3) DESCRIPTION  REF NUMBER & MFR CODE	(4) USABLE ON CODE	(5) UNIT OF MEAS	(6) QTY INC IN	(7) 30-DAY DS MAINT ALLOWANCE			(7) 30-DAY GS MAINT ALLOWANCE			(8) 1-YR ALW PER 100 EQUIP	(9) DEPOT MAINT ALW PER 100 EQUIP	(10) ILLUS- TRATION		
						(a)	(b)	(c)	(a)	(b)	(c)	CNTGY	FIG. NO.	ITEM NO.		
X1 00433		SPRING: RELIEF VALVE 29Z24 (36346)		EA	1											
X1 00434		SPRING: RELIEF VALVE 29Z25 (36346)		EA	1											
X1 00435		SPRING RETAINER: CAP 77Z67 (36346)		EA	1											
X1 00436		SPRING: SECOND STAGE 29Z04 (36346)		EA	1											
X1 00437		SPRING: SECOND STAGE PRESSURE ADJUSTING 29Z02 (36346)		EA	1											
X1 00438		STEM ASSEMBLY: ARGON REGULATING 33Y48 (36346)		EA	1											
X2 O 00439		STOP, BALL: TUBE BODY 150Z29 (36346)		EA	1									7	10	
X1 00440		STUD: REGULATOR 34Z66 (36346)		EA	2											
P O 00441	3431-981-1034	TUBE, GAGE, REGULATOR 27Z84 (36346)		EA	1	*	*	2	*	*	2	6	5	7	9	
X1 00442		BUMPER: FLOW METER TUBE 52Z34 (36346)		EA	1											
X1 00443		RETAINER: BALL FLOAT BUMPER 78Z62 (36346)		EA	1											
P O 00444	3431-981-1035	TUBE GAGE REGULATOR: CALIBRATED 55Y44 (36346)		EA	1	*	*	2	*	*	2	6	5	7	5	
X2 O 00445		FLOAT: TUBE GAGE REGULATOR 78Z15 (36346)		EA	1									7	4	
X2 O 00446	5330-818-0782	WASHER, NONMETALLIC: TUBE GAGE REGULA- TOR, RUBBER		EA	1									7	11	
X1 00447		WASHER, FLAT: NOZZLE TO REGULATOR, BRONZE, 0.250 IN. ID, 3/8 IN. OD, 0.005 IN. THK 94Z07 (36346)		EA	2											
X1 00448		WASHER: REGULATOR 6430-3938 (36346)		EA	2											
P O 00449	5355-981-1193	WINDOW, DIAL: PRESSURE 72A70 (36346)		EA	1											SEE GRP 4702
X1 00450		YOKE: REGULATOR 61Z59 (36346)		EA	2											
00451		GROUP 95 - GENERAL USE STANDARDIZED PARTS														
00452		9501 - BULK MATERIAL														
P O 00453	5970-242-5019	INSULATION SHEET, ELECTRICAL		SH		*	*	*	*	*	*	2	2			
P O 00454	5330-599-7216	PAPER, GASKET		FT		*	*	*	*	*	*	3	3			
P O 00455	5330-543-7098	RUBBER SHEET, SOLID		FT		*	*	*	*	*	*	3	3			
P O 00456	5330-202-3495	RUBBER SHEET, SOLID		FT		*	*	*	*	*	*	5	5			
P O 00457	6145-160-5118	WIRE, ELECTRICAL		FT		*	*	*	*	*	*	3	3			
P O 00458	6145-635-9290	WIRE, ELECTRICAL		FT		*	*	*	*	*	*	10	10			
P O 00459	6145-160-5120	WIRE, ELECTRICAL		FT		*	*	*	*	*	*	5	5			
P O 00460	6145-669-6680	WIRE, ELECTRICAL		FT		*	*	*	*	*	*	5	5			
P O 00461	6145-160-5133	WIRE, ELECTRICAL		FT		*	*	*	*	*	*	8	8			

(1)	(2)	(3)	(4)	(5)	(6)			(7)			(8)	(9)	(10)		
SMR	FEDERAL	DESCRIPTION	USABLE	UNIT	30-DAY DS MAINT			30-DAY GS MAINT			1-YR	DEPOT	ILLUS-		
CODE	STOCK		ON	OF	ALLOWANCE			ALLOWANCE			ALW	MAINT	TRATION		
	NUMBER	REF NUMBER & MFR CODE	CODE	MEAS	QTY	(a)	(b)	(c)	(a)	(b)	(c)	PER	ALW	(a)	(b)
					INC							100	100	FIG.	ITEM
					IN	1-20	21-50	51-100	1-20	21-50	51-100	EQUIP	100	NO.	NO.
					UNIT							CNTGY	EQUIP		
P O	6145-504-1310	WIRE, ELECTRICAL		FT		*	*	*	*	*	*	5		5	
00462															
P O	6145-669-6775	WIRE, ELECTRICAL		FT		*	*	*	*	*	*	14		14	
00463															
P O	6145-160-5190	WIRE, ELECTRICAL		FT		*	*	*	*	*	*	16		16	
00464															
P O	6145-295-0801	WIRE, ELECTRICAL		FT		*	*	*	*	*	*	5		5	
00465															
00466		GROUP 99 - PARTS PECULIAR													
00467		9901 - MULTI-LISTED PARTS													
P O	5975-669-9467	BOX CONNECTOR, ELECTRICAL		EA	4	*	2	2	*	2	2	20		20	
00468		2522 (59730)													
P O	5975-296-6984	BOX CONNECTOR, ELECTRICAL		EA	3	*	2	2	*	2	2	15		15	
00469		458673 (36346)													

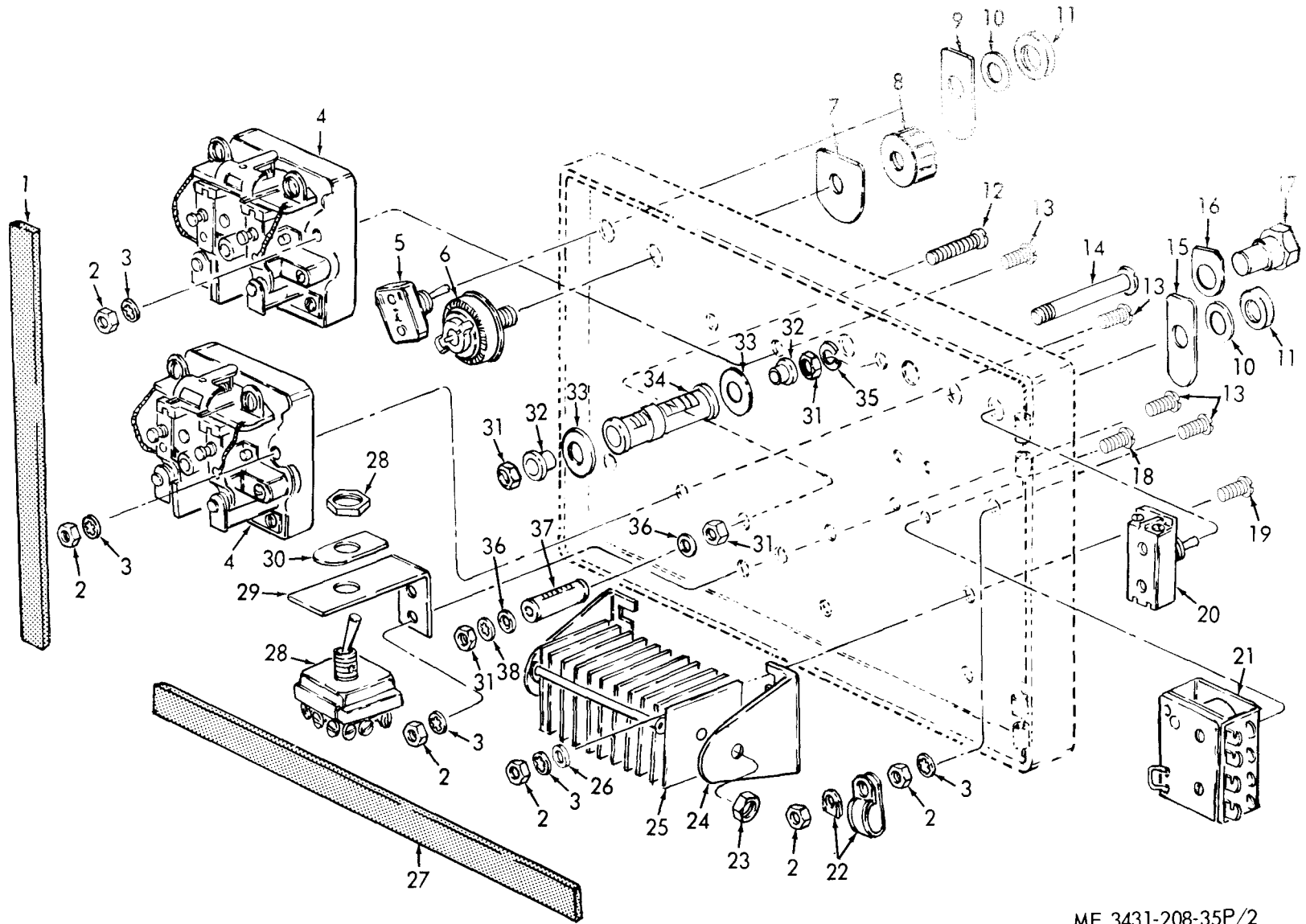


ME 3431-208-35P/1

Figure 1. Control.

INDEX TO PARTS, FIGURE 1

Reference Number	Functional Group	Item Name	Reference Number	Functional Group	Item Name
1	4407	NUT	23	2210	WASHER
1	4408	NUT	24	4410	SCREW
1	4410	NUT	25	2210	PLATE
1	4411	NUT	26	2210	SCREW
2	4407	WASHER	27	4407	WASHER
2	4408	WASHER	28	4407	WASHER
2	4411	WASHER	28	4410	WASHER
3	4411	WASHER	29	4407	NUT
4	4411	RESISTOR	30	4408	NUT
5	4407	SCREW	31	4408	TERMINAL BOARD
5	4410	SREW	32	4408	SCREW
6	4411	GROMMET	33	4408	INSULATOR
7	4411	SHIELD	34	4408	CONNECTOR
8	4408	CONNECTOR	35	4408	BOX CONNECTOR
9	4408	GROMMET	36	4407	BUMPER
10	4408	BOX CONNECTOR	37	4408	GASKET
11	4409	NUT	38	4410	RELAY
12	4408	WASHER	39	4408	GASKET
12	4409	WASHER	40	4408	CONNECTOR
13	2210	PLATE	41	4407	TERMINAL
14	4409	INSULATION	42	4407	TERMINAL
15	4409	MOUNT	43	4408	HOSE AY
16	4408	SCREW	44	4407	CLAMP
16	4409	SCREW	45	4411	SLIDER
17	4409	FUSE	46	4408	GASKET
18	4407	SCREW	47	4410	VALVE
19	4407	HANDLE	48	4410	GASKET
20	4407	GASKET	49	4408	ADAPTER
21	4407	SCREW	50	4410	PLATE
21	4408	SCREW	51	4407	WASHER
21	4411	SCREW	52	4407	NUT
22	2210	NUT	53	4407	CABINET

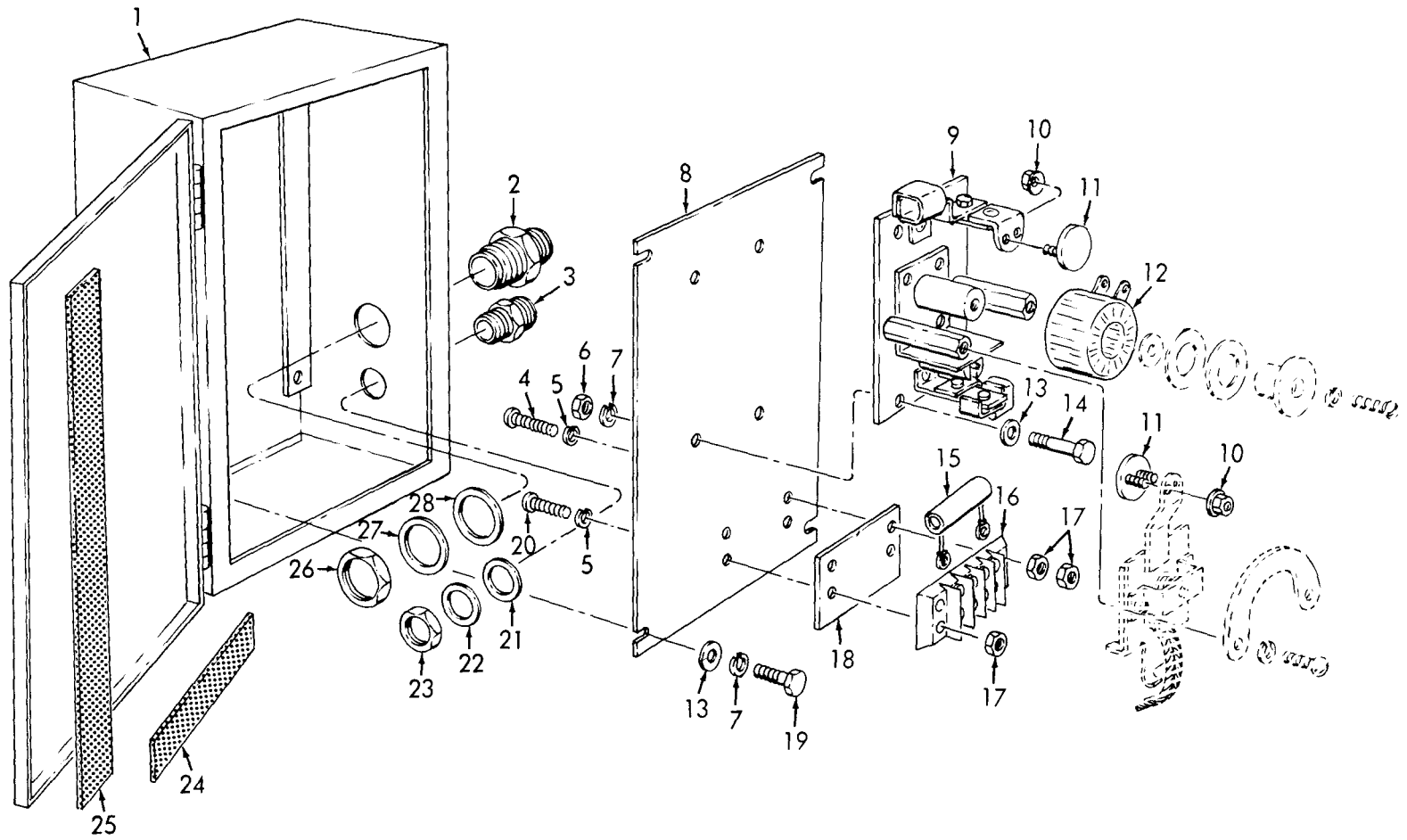


ME 3431-208-35P/2

Figure 2. Rectifier, Relays, Resistors, and Switch.

INDEX TO PARTS, FIGURE 2

Reference Number	Functional Group	Item Name	Reference Number	Functional Group	Item Name
1	4407	GASKET	18	4410	SCREW
2	4407	NUT	19	4413	SCREW
2	4410	NUT	20	4410	SWITCH
2	4413	NUT	21	4410	RELAY
3	4407	WASHER	22	4407	CLAMP
3	4410	WASHER	23	4413	NUT
3	4413	WASHER	24	4413	BRACKET
4	4410	RELAY	25	4413	RECTIFIER
5	4410	SWITCH	26	4413	WASHER
6	4411	RESISTOR	27	4407	GASKET
7	2210	PLATE	28	4410	SWITCH
8	4411	KNOB	29	4410	BRACKET
9	2210	NAMEPLATE	30	2210	PLATE
10	4410	BUSHING	31	4411	NUT
11	4410	NUT	32	4411	WASHER
12	4411	SCREW	33	4411	WASHER
13	4407	SCREW	34	4411	RESISTOR
13	4410	SCREW	35	4411	WASHER
14	4411	SCREW	36	4411	WASHER
15	2210	PLATE	37	4411	RESISTOR
16	2210	PLATE	38	4411	WASHER
17	4409	FUSEHOLDER			



ME 3431-208-35P/3

Figure 3. Contactor Box and Contactor Components.



INDEX TO PARTS, FIGURE 3

Reference Number	Functional Group	Item Name	Reference Number	Functional Group	Item Name
1	4410	CABINET	16	4408	TERMINAL BOARD
2	4408	BOX CONNECTOR	17	4408	NUT
3	4408	BOX CONNECTOR	17	4411	NUT
4	4408	SCREW	18	4408	INSULATOR
5	4408	WASHER	19	4410	SCREW
6	4410	NUT	20	4408	SCREW
7	4410	WASHER	21	4408	GASKET
8	4410	PANEL	22	4408	WASHER
9	4410	CONTACTOR	23	4408	LOCKNUT
10	4410	NUT	24	4410	GASKET
11	4410	CONTACT	25	4410	GASKET
12	4410	COIL	26	4408	LOCKNUT
13	4410	WASHER	27	4408	WASHER
14	4410	SCREW	28	4408	GASKET
15	4411	RESISTOR			

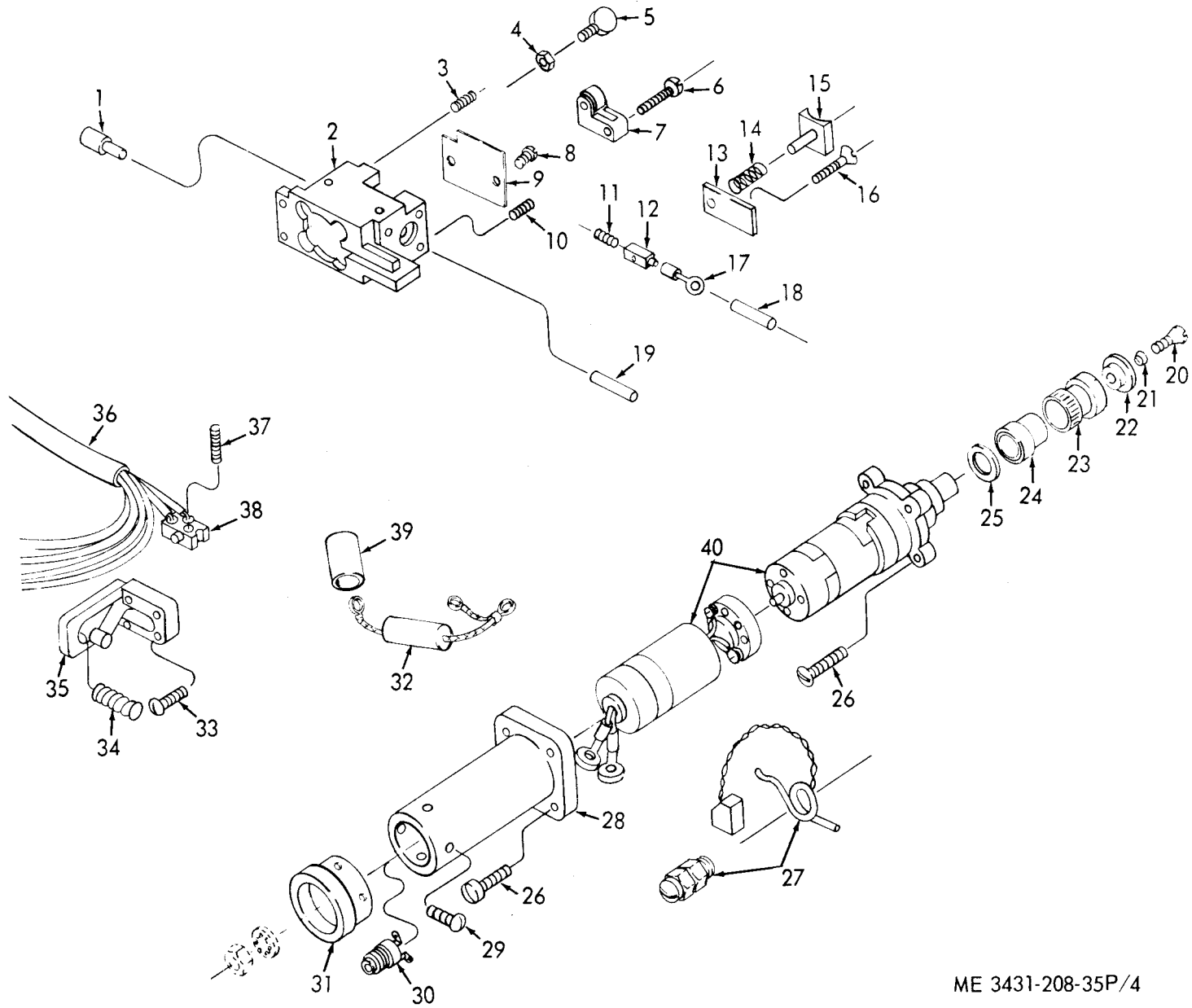
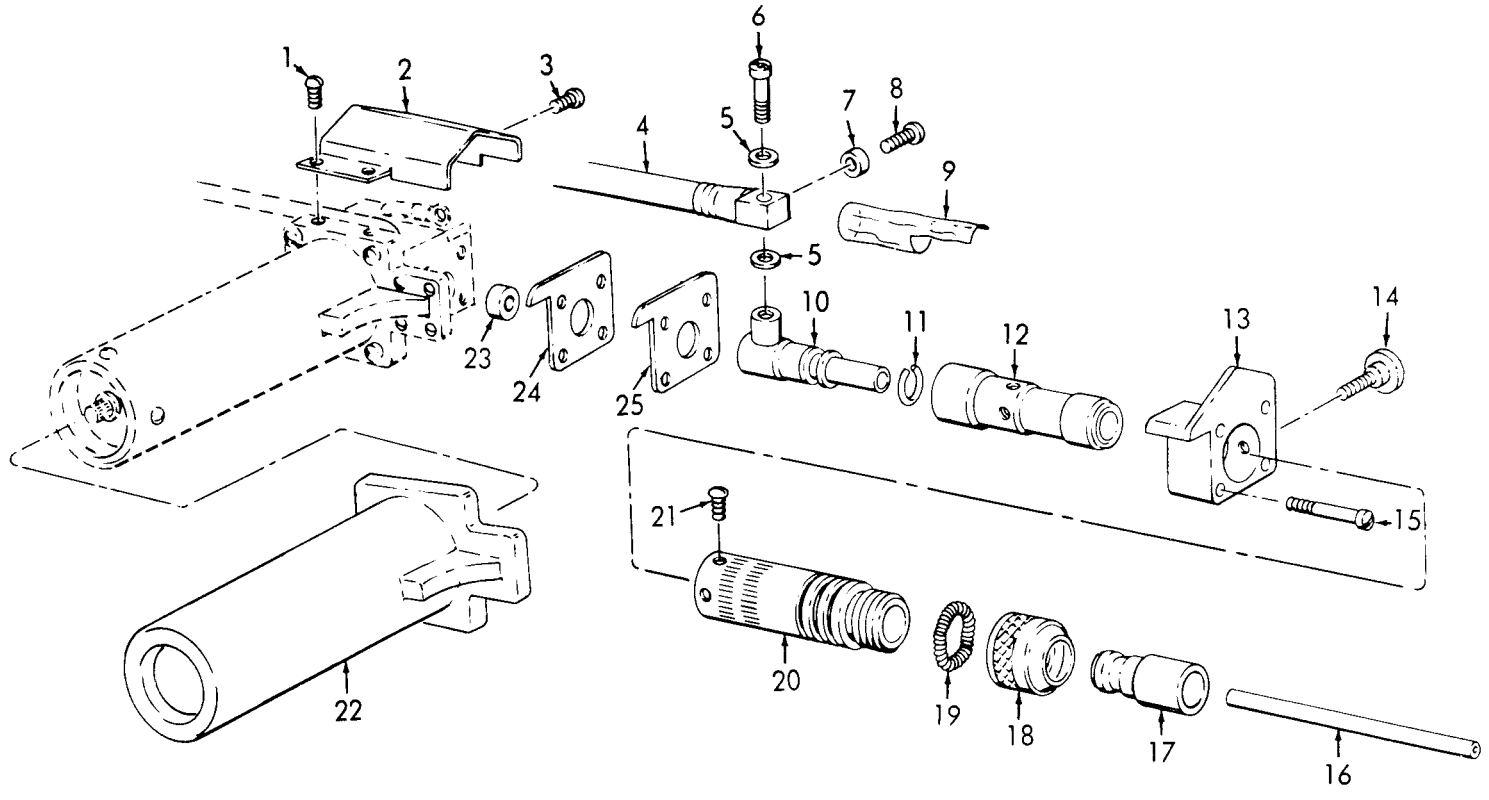


Figure 4. Motor and Housing.

ME 3431-208-35P/4

INDEX TO PARTS, FIGURE 4

Reference Number	Functional Group	Item Name	Reference Number	Functional Group	Item Name
1	4415	BUSHING	21	4415	WASHER
2	4415	HOUSING	22	4415	RETAINER
3	4415	SETSCREW	23	4415	SLEEVE
4	4415	NUT	24	4415	SHAFT
5	4415	THUMBSCREW	25	4415	WASHER
6	4415	SCREW	26	4415	SCREW
7	4415	PRESSURE ROLL	27	4415	BRUSH
8	2210	SCREW	28	4415	HANDLE
9	2210	PLATE	29	4415	SCREW
10	4415	SETSCREW	30	4410	SWITCH
11	4415	SETSCREW	31	4415	END PLATE
12	4415	BLOCK-LEAD	32	4410	CAPACITOR AY
13	4415	BLOCK	33	4415	SCREW
14	4415	SPRING	34	4415	SPRING
15	4415	SHOE	35	4415	TRIGGER AY
16	4415	SCREW	36	4408	CORD AY
17	4415	TERMINAL	37	4410	SCREW
18	4415	INSULATOR SLEEVE	38	4410	SWITCH
19	4415	BUSHING	39	4410	INSULATOR SLEEVE
20	4415	SCREW	40	4415	MOTOR

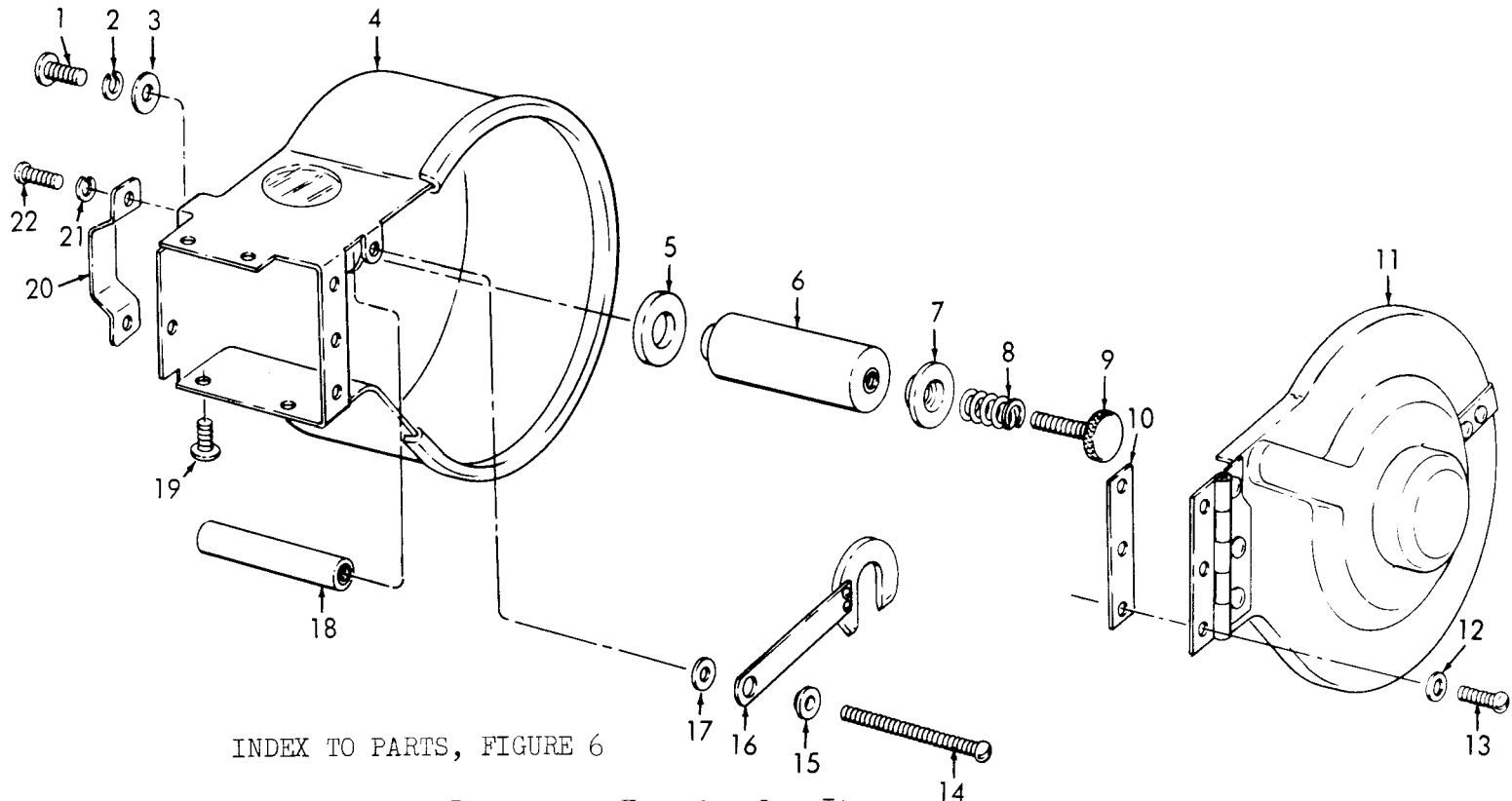


ME 3431-208-35P/5

Figure 5. Nozzle.

INDEX TO PARTS, FIGURE 5

Reference Number	Functional Group	Item Name	Reference Number	Functional Group	Item Name
1	4415	SCREW	14	4415	SCREW
2	4415	SHIELD	15	4415	SCREW
3	4415	SCREW	16	4415	TUBE
4	4408	CABLE AY	17	4415	NOZZLE
5	4408	WASHER	18	4415	RETAINER
6	4408	SCREW	19	4415	SPRING
7	4415	SPACER	20	4415	HOLDER
8	4415	SCREW	21	4415	SCREW
9	4408	INSULATOR SLEEVE	22	4415	BOOT
10	4415	BODY	23	4415	BUSHING
11	4415	INSULATOR	24	4415	INSULATOR
12	4415	SLEEVE	25	4415	GASKET
13	4415	HOUSING			

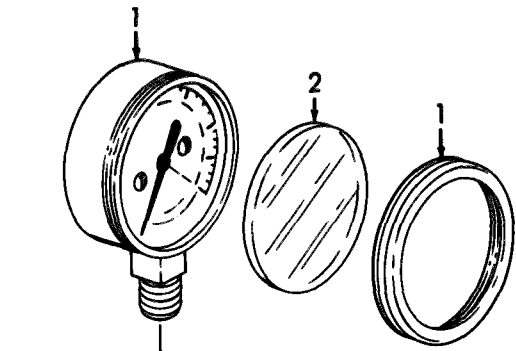


INDEX TO PARTS, FIGURE 6

Reference Number	Functional Group	Item Name	Reference Number	Functional Group	Item Name
1	4415	SCREW	12	4415	WASHER
2	4415	WASHER	13	4415	SCREW
3	4415	WASHER	14	4415	SCREW
4	4415	ENCLOSURE	15	4415	RETAINER
5	4415	WASHER	16	4415	DISK AY
6	4415	SHAFT	17	4415	WASHER
7	4415	RING	18	4415	ROLLER
8	4415	SPRING	19	4415	SCREW
9	4415	SCREW	20	4415	CLAMP
10	4415	SHIM	21	4415	WASHER
11	4415	COVER AY	22	4415	SCREW

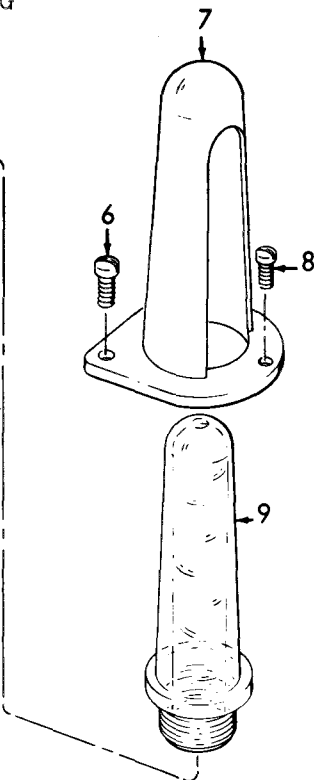
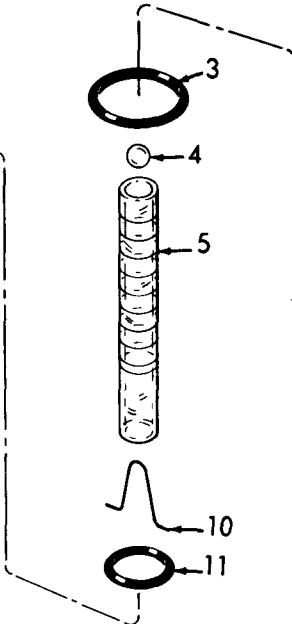
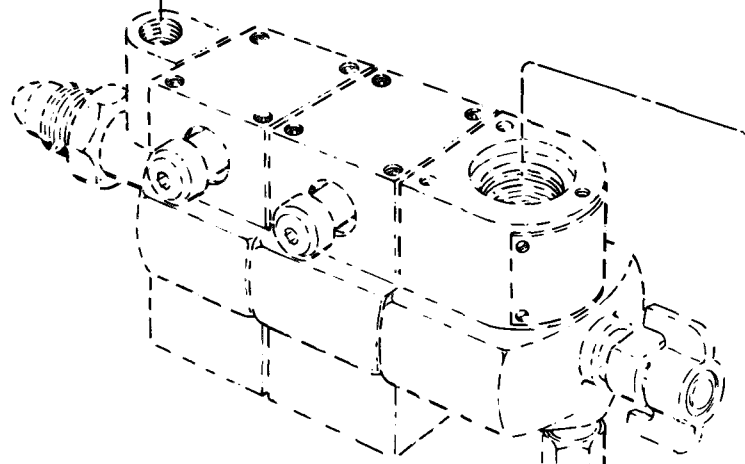
ME 3431-208-35P/6

Figure 6. Spool Enclosure and Components.



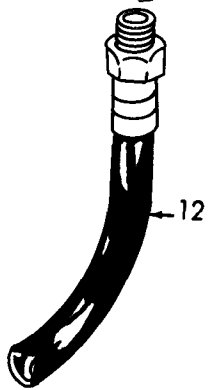
INDEX TO PARTS, FIGURE 7

Reference Number	Functional Group	Item Name
1	4702	GAGE
2	4702	WINDOW
3	4705	PACKING
4	4705	FLOAT
5	4705	TUBE
6	4705	SCREW



INDEX TO PARTS, FIGURE 7 (cont)

Reference Number	Functional Group	Item Name
7	4705	GUARD
8	4705	SCREW
9	4705	TUBE
10	4705	STOP
11	4705	WASHER
12	2202	HOSE



ME 3431-208-35P/7

Figure 7. Argon Regulator.

SECTION IV. INDEX-FEDERAL STOCK NUMBER AND REFERENCE NUMBER  
 CROSS-REFERENCE TO INDEX NUMBER

STOCK NUMBER	INDEX NUMBER	STOCK NUMBER	INDEX NUMBER
3431-018-3096	00148	5305-013-2723	00361
3431-018-3097	00146	5305-013-2727	00088
3431-018-3098	00147	5305-013-2727	00280
3431-859-4227	00376	5305-013-2727	00355
3431-859-4232	00299	5305-013-2735	00354
3431-859-4239	00140	5305-019-2207	00082
3431-859-4239	00311	5305-019-2207	00279
3431-859-4240	00306	5305-019-2662	00258
3431-859-4241	00095	5305-019-2662	00365
3431-859-4241	00262	5305-053-1108	00320
3431-859-4242	00100	5305-068-0502	00228
3431-859-4242	00264	5305-071-2239	00227
3431-859-4243	00050	5305-206-3716	00016
3431-859-4243	00167	5305-207-3239	00358
3431-893-3123	00340	5305-290-2046	00353
3431-893-3124	00385	5305-515-7156	00426
3431-893-3126	00375	5305-717-6955	00303
3431-893-3128	00309	5305-719-5339	00367
3431-893-3130	00310	5305-719-5353	00368
3431-893-3134	00374	5305-889-3116	00017
3431-977-5381	00335	5305-889-3116	00179
3431-977-5382	00203	5305-889-3116	00348
3431-977-5382	00312	5305-889-3116	00356
3431-977-5383	00307	5305-977-5512	00366
3431-977-5385	00210	5305-984-4976	00347
3431-977-5386	00400	5305-984-4976	00349
3431-977-5387	00030	5305-984-6192	00363
3431-977-5387	00137	5305-984-6193	00257
3431-977-5388	00156	5305-984-6194	00081
3431-977-5388	00315	5305-984-6194	00084
3431-977-5389	00344	5305-984-6194	00085
3431-977-5390	00379	5305-984-6194	00086
3431-977-5391	00317	5305-984-6194	00087
3431-977-5392	00034	5305-984-6194	00091
3431-977-5392	00153	5305-984-6194	00182
3431-977-5393	00336	5305-984-6194	00256
3431-977-5394	00337	5305-984-6194	00278
3431-977-5395	00329	5305-984-6210	00359
3431-977-5396	00033	5305-984-7363	00090
3431-977-5396	00152	5310-011-3102	00007
3431-981-1033	00334	5310-012-0386	00235
3431-981-1034	00441	5310-013-1044	00103
3431-981-1035	00444	5310-013-1044	00188
3431-981-1036	00003	5310-013-1044	00189
3439-775-6476	00004	5310-013-1044	00199
5305-012-1832	00295	5310-013-1044	00239
5305-012-1832	00362	5310-013-1044	00286
5305-013-2631	00350	5310-042-6903	00063
5305-013-2636	00364	5310-042-6903	00293
5305-013-2688	00083	5310-043-2226	00392
5305-013-2688	00254	5310-045-3299	00106
5305-013-2688	00352	5310-045-3299	00190
5305-013-2705	00357	5310-045-3299	00285
5305-013-2711	00177	5310-045-3299	00393
5305-013-2711	00180	5310-082-1404	00101
5305-013-2711	00198	5310-082-1404	00284
5305-013-2711	00230	5310-184-8977	00018
5305-013-2719	00178	5310-187-1851	00187
5305-013-2719	00181	5310-187-1851	00390
5305-013-2719	00229	5310-187-1868	00102



SECTION IV. INDEX-FEDERAL STOCK NUMBER AND REFERENCE NUMBER  
 CROSS-REFERENCE TO INDEX NUMBER (CONTINUED)

STOCK NUMBER	INDEX NUMBER	STOCK NUMBER	INDEX NUMBER
5310-261-3109	00197	5905-834-7831	00273
5310-262-4481	00296	5920-280-4465	00036
5310-262-6169	00056	5920-280-4465	00192
5310-262-6169	00061	5930-239-3661	00259
5310-262-6169	00173	5930-239-3661	00381
5310-262-6169	00174	5930-615-9182	00096
5310-262-6169	00221	5930-615-9182	00263
5310-262-6169	00271	5930-655-1508	00094
5310-262-6169	00272	5930-655-1508	00261
5310-527-3288	00111	5930-977-8915	00260
5310-543-2410	00391	5930-977-8915	00382
5310-559-0070	00104	5940-983-6082	00183
5310-559-0070	00105	5940-983-6082	00232
5310-559-0070	00107	5940-983-6086	00097
5310-559-0070	00108	5940-983-6086	00184
5310-559-0070	00109	5945-173-8320	00075
5310-559-0070	00110	5945-173-8320	00251
5310-559-0070	00112	5945-846-0433	00076
5310-559-0070	00265	5945-846-0433	00252
5310-559-0070	00266	5945-859-4497	00077
5310-559-0070	00297	5945-859-4497	00253
5310-579-0070	00287	5970-242-5019	00195
5310-582-5965	00238	5970-242-5019	00289
5310-720-7798	00065	5970-242-5019	00453
5310-761-6882	00222	5975-296-6984	00024
5310-934-9757	00057	5975-296-6984	00134
5310-934-9757	00058	5975-296-6984	00136
5310-934-9757	00059	5975-296-6984	00206
5310-934-9757	00060	5975-296-6984	00469
5310-934-9757	00062	5975-669-9467	00023
5310-934-9757	00064	5975-669-9467	00133
5310-934-9757	00175	5975-669-9467	00135
5310-934-9757	00248	5975-669-9467	00205
5310-934-9757	00249	5975-669-9467	00468
5310-934-9757	00270	6105-893-3139	00332
5310-934-9757	00292	6130-859-4496	00074
5310-934-9757	00338	6130-859-4496	00294
5310-950-1310	00387	6145-160-5118	00120
5330-202-3495	00039	6145-160-5118	00243
5330-202-3495	00041	6145-160-5118	00457
5330-202-3495	00212	6145-160-5120	00114
5330-202-3495	00216	6145-160-5120	00241
5330-202-3495	00456	6145-160-5120	00459
5330-543-7098	00158	6145-160-5133	00122
5330-543-7098	00160	6145-160-5133	00461
5330-543-7098	00162	6145-160-5190	00130
5330-543-7098	00165	6145-160-5190	00464
5330-543-7098	00455	6145-295-0801	00126
5330-599-7216	00373	6145-295-0801	00465
5330-599-7216	00454	6145-504-1310	00128
5330-818-0782	00446	6145-504-1310	00245
5340-893-3133	00378	6145-504-1310	00462
5355-981-1193	00398	6145-635-9290	00116
5355-981-1193	00449	6145-635-9290	00458
5905-101-6865	00226	6145-669-6680	00118
5905-101-6865	00275	6145-669-6680	00460
5905-173-6693	00274	6145-669-6775	00124
5905-549-5659	00080	6145-669-6775	00463
5905-549-5659	00277	6685-981-1194	00397
5905-686-2872	00079	6685-981-1194	00409
5905-686-2872	00276	9905-803-9431	00009
5905-834-7831	00078		

SECTION IV. INDEX-FEDERAL STOCK NUMBER AND REFERENCE NUMBER  
 CROSS-REFERENCE TO INDEX NUMBER (CONTINUED)

REFERENCE NO.	MFG CODE	INDEX NO.	REFERENCE NO.	MFG CODE	INDEX NO.
48N27	36346	00176	521072	36346	00013
48N27	36346	00346	521072	36346	00071
48N29	36346	00169	521073	36346	00067
48N29	36346	00330	521074	36346	00224
48N30	36346	00371	521075	36346	00008
48N33	36346	00388	521075	36346	00225
48N36	36346	00394	521076	36346	00069
48N37	36346	00319	521078	36346	00003
48N38	36346	00318	521179	36346	00333
48N39	36346	00343	521180	36346	00301
48N42	36346	00380	521286	36346	00314
48N43	36346	00341	521287	36346	00203
48N45	36346	00344	521287	36346	00312
48N48	36346	00383	521289	36346	00321
48N49	36346	00313	528286	36346	00155
48N50	36346	00379	55N78	36346	00334
48N51	36346	00331	55N88	36346	00335
48N53	36346	00385	55N89	36346	00336
48N56	36346	00309	55N90	36346	00337
48N59	36346	00310	55Y44	36346	00444
48N67	36346	00014	52N17	36346	00329
48N67	36346	00072	56N32	36346	00307
48N74	36346	00377	56W71	36346	00299
48N75	36346	00342	6170-0851	36346	00427
48N78	36346	00328	6170-0878	36346	00428
48N32	36346	00374	6170-6882	36346	00425
48N83	36346	00305	6170-6911	36346	00424
48N85	36346	00378	61Z59	36346	00050
48V02	36346	00326	627-1049	36346	00300
48V03	36346	00306	627Y14	36346	00397
48V05	36346	00340	627Y14	36346	00409
48V06	36346	00324	63-300-121	36346	00220
48V07	36346	00384	6310-0927	36346	00418
48V08	36346	00376	6372-0100	36346	00417
48V14	36346	00332	6430-3938	36346	00448
48V15	36346	00369	68Z70	36346	00412
48V16	36346	00370	72A70	36346	00398
48V17	36346	00317	72A70	36346	00449
48V18	36346	00345	74S76	36346	00033
48V25	36346	00034	74S76	36346	00152
48V25	36346	00153	77Z67	36346	00435
48V35	36346	00375	77Z69	36346	00410
48V36	36346	00302	77Z72	36346	00413
48V45	36346	00316	77Z73	36346	00414
49N82	36346	00386	78Z15	36346	00445
488349	36346	00210	78Z62	36346	00443
488706	36346	00233	80N29	36346	00075
5052F87	36346	00004	80N29	36346	00251
52N31	36346	00026	80W09	36346	00095
52N31	36346	00201	80W09	36346	00262
52Z34	36346	00442	80Z50	36346	00401
521060	36346	00021	80Z51	36346	00402
521065	36346	00029	80Z83	36346	00403
521066	36346	00049	80W43	36346	00036
521067	36346	00204	80W43	36346	00192
521068	36346	00031	82Z43	36346	00411
521068	36346	00141	84W84	36346	00421
521069	36346	00207	84W85	36346	00420
521071	36346	00010	85W37	36346	00419
521071	36346	00066	89W80	36346	00078

SECTION IV. INDEX-FEDERAL STOCK NUMBER AND REFERENCE NUMBER  
 CROSS-REFERENCE TO INDEX NUMBER (CONTINUED)

REFERENCE NO.	MFG CODE	INDEX NO.	REFERENCE NO.	MFG CODE	INDEX NO.
89W80	36346	00273	94Z07	36346	00447
89W81	36346	00052	95N37	36346	00015
89W81	36346	00269	95N37	36346	00339
90A23	36346	00142	95W32	36346	00226
90A24	36346	00144	95W22	36346	00275
90W30	36346	00094	95W39	36346	00150
90W30	36346	00261	96W10	36346	00053
91W66	36346	00097	96W10	36346	00196
91W66	36346	00184	96W38	36346	00096
92W11	36346	00183	96W38	36346	00263
92W11	36346	00232	97W14	36346	00288
92W57	36346	00047	97W44	36346	00171
92W57	36346	00166	97W44	36346	00219
92W58	36346	00283	97W55	36346	00076
92Z01	36346	00432	97W55	36346	00252
93W77	36346	00098	97	70485	00048
93W77	36346	00139	97	70485	00268
93W77	36346	00145	98W66	36346	00259
93W77	36346	00151	98W66	36346	00381
93W77	36346	00234	98W73	36346	00027
93W77	36346	00304	98W84	36346	00099

SECTION IV. INDEX-FEDERAL STOCK NUMBER AND REFERENCE NUMBER  
 CROSS-REFERENCE TO INDEX NUMBER (CONTINUED)

REFERENCE NO.	MFG CODE	INDEX NO.	REFERENCE NO.	MFG CODE	INDEX NO.
89W80	36346	00273	94Z07	36346	447
89W81	36346	00052	95N37	36346	15
89W81	36346	00269	95N37	36346	339
90A23	36346	00142	95W32	36346	226
90A24	36346	00144	95W22	36346	275
90W30	36346	00094	95W39	36346	150
90W30	36346	00261	96W10	36346	53
91W66	36346	00097	96W10	36346	196
91W66	36346	00184	96W38	36346	96
92W11	36346	00183	96W38	36346	263
92W11	36346	00232	97W14	36346	288
92W57	36346	00047	97W44	36346	171
92W57	36346	00166	97W44	36346	219
92W58	36346	00283	97W55	36346	76
92Z01	36346	00432	97W55	36346	252
93W77	36346	00098	97	70485	48
93W77	36346	00139	97	70485	268
93W77	36346	00145	98W66	36346	259
93W77	36346	00151	98W66	36346	381
93W77	36346	00234	98W73	36346	27
93W77	36346	00304	98W84	36346	99

By Order of the Secretary of the Army:

Official:

**W. C. WESTMORELAND,**  
*General, United States Army,*  
*Chief of Staff.*

**KENNETH G. WICKHAM,**  
*Major General, United States Army,*  
*The Adjutant General.*

Distribution:

To be distributed in accordance with DA Form 1.2--25, Section I, (qty rqr block no. 183) Direct and General Support maintenance requirements for Welding Equipment.

★ U. S. GOVERNMENT PRINTING OFFICE: 1970-397-097/631





**TM 5-3431-208-35P WELDING SET, ARC, INERT GAS SHIELDED--1970**